



**NOTICE OF  
REGULAR PARKS COMMITTEE MEETING**

**Wednesday  
February 11, 2009  
Regional District Board Room  
175 Ingram Street, Duncan, BC**

**3:30 p.m.**

---

**A G E N D A**

		<b><u>Pages</u></b>
<b>3:30 p.m.</b>	<b>START OF MEETING</b>	
<b>1.</b>	<b><u>APPROVAL OF AGENDA</u></b>	
<b>2.</b>	<b><u>ADOPTION OF MINUTES</u></b>	
	<b>M1</b> Minutes of Parks Committee Meeting of October 22, 2008	1 – 4
<b>3.</b>	<b><u>BUSINESS ARISING FROM MINUTES</u></b>	
<b>4.</b>	<b><u>STAFF REPORTS</u></b>	
	<b>R1</b> Staff Report from Tanya Soroka, Parks Planning Technician, regarding Application for BEAT Community Planning Grant	5 – 8
	<b>R2</b> Staff Report from Dan Brown, Parks Trail Planning Technician, regarding Cobble Hill Mountain Bike Race Event	9 – 14
	<b>R3</b> Staff Report from Brian Farquhar, Manager, Parks & Trails Division, regarding Island Corridor Foundation E&N Rail Trail Standards and Guidelines Update	15 – 16
	<b>R4</b> Staff Report from Ryan Dias, Parks Operations Superintendent, regarding Cowichan Valley Trail Completion Initiative	17 – 23
	<b>R5</b> Staff Report from Brian Farquhar, Manager, Parks & Trails Division, regarding an Update on the Trails Strategy for BC	24 – 43
	<b>R6</b> Staff Report from Brian Farquhar, Manager, Parks & Trails Division, regarding the Regional Parkland Acquisition Fund Referendum	44 - 59

5. **INFORMATION**

IN1 Greenway Conference

60 - 64

6. **NEW BUSINESS**

7. **PUBLIC/PRESS QUESTIONS**

8. **CLOSED SESSION**

Motion that the meeting be closed to the public in accordance with the *Community Charter* Part 4, Division 3, Section 90(1), Subsections as noted in accordance with each agenda item.

**CS(D1)** Cowichan Community Land Trust Delegation, regarding Land Acquisition (Subsection 1(e))

9. **NEXT MEETING** – April 8, 2009

10. **ADJOURNMENT**

**NOTE:** A copy of the full agenda package is available at the CVRD website [www.cvrld.bc.ca](http://www.cvrld.bc.ca)

Director M. Dorey, Chair  
Director L. Iannidinardo, Vice Chair  
Director L. Duncan

Director G. Giles  
Director K. Kuhn

Director D. Haywood  
Director P. Kent

Minutes of the Parks Committee Meeting held on Wednesday, October 22, 2008 at 3:00 p.m. in the Regional District Board Room, 175 Ingram Street, Duncan, BC

**PRESENT**

Director Gerry Giles, Chair  
Director Phil Kent  
Director Mel Dorey  
John Scull  
Alternate Director Joan McKenzie  
Director Mike Walker  
Director Loren Duncan  
Director Brooke Hodson

**M1**

Absent: Director Joe Allan  
Director Rob Hutchins  
Director Jon Lefebure  
Don Barrie  
Brent Heath, Vice Chair

**CVRD STAFF**

Brian Farquhar, Parks Manager  
Warren Jones, Administrator  
Tom Anderson, Manager, Development Services  
Mary Anne McAdam, Recording Secretary

**APPROVAL OF  
AGENDA**

The agenda was amended with the addition of:  
Correspondence: C1 - John Botelho, LifeSport Coaching regarding Half IronMan Triathlon Event at Shawnigan Lake.

It was Moved and Seconded  
That the agenda as amended be approved.

MOTION CARRIED

**M1 - MINUTES**

It was Moved and Seconded  
That the Minutes of the Special Parks Committee Meeting of July 23, 2008, be accepted.

MOTION CARRIED

**BUSINESS ARISING**

Regarding Director Duncan's enquiry about work on the Cowichan Valley Trail, Brian Farquhar confirmed that the Ice-T Grant is specific to trail work being carried out on the yet to be completed portions of the trail only on the north side of the Cowichan River, except for the grant funds allocated to the Kinsol Trestle Rehabilitation.

Regarding Director Dorey's enquiry concerning a Heritage Bylaw and registry, Tom Anderson, Manager of Developments Services, commented that although this is a complex process, the CVRD is working towards implementing this. The Kinsol Trestle heritage designation would not be held up because of this, as the Board's prior direction is to apply for federal heritage description of the structure.

## **DELEGATIONS**

### **D1 – Warrick Whitehead**

Warrick Whitehead, advocate of the Koksilah River Vision Plan, delivered a presentation on the Koksilah River Ancient Forest.

It was Moved and Seconded

That the Board of the Cowichan Valley Regional District send a letter to the Minister of Environment endorsing the Koksilah River Vision Plan and support for acquisition of these lands by the Province to create an expanded Koksilah River Provincial Park from the Koksilah River Ancient Forest to the area just upstream of the historic Kinsol Trestle.

### **MOTION CARRIED**

Chair Giles requested that Warrick Whitehead provide the Parks Department with a legal description of the area being considered for acquisition.

Director Duncan brought forward his concerns regarding the provincial government's lack of action in acquiring the Eagle Heights Grassland site.

It was Moved and Seconded

That staff prepare a letter to the Nature Conservancy of Canada endorsing the acquisition of Eagle Heights Grassland.

It was Moved and Seconded

That discussion respecting the Eagle Heights Grasslands be referred to the next Parks Commission meeting to enable staff to prepare a report regarding this matter.

### **MOTION CARRIED**

## **STAFF REPORTS**

### **R1 – Regional Parkland Acquisition Fund Update**

Brian Farquhar provided the Parks Committee with an update of the process leading up to the referendum, including the extensive public information and awareness campaign.

This information was received and filed.



**R2 – Cobble Hill  
Mountain Recreation  
Area Open House**

Brian Farquhar informed the Parks Committee that it has been 5 years since the adoption of the Cobble Hill Mountain Recreation Management Plan. Reviewing the plan for the possibility of expanding the recreation area management tenure. A Public Open House is scheduled for Thursday, October 23, 2008, for the public and trail user to learn what has been done over the past 5 years and to share input/ideas for the next 5 years.

This information was received and filed.

**R3 –Island Coastal  
Economic Trust &  
Cowichan Valley Trail  
Initiative**

Brian Farquhar provided the Parks Committee with an overview of the public/media announcement of Thursday, October 16, 2008, by Island Coastal Economic Trust that formally approved \$1,743,891 in grant funding for all project components outlined in the application by the CVRD for the completion of the Cowichan Valley Trail, including rehabilitation of the Kinsol Trestle.

This information was received and filed.

**CORRESPONDENCE**

**C1- Half IronMan  
Triathlon Event at  
Shawnigan Lake**

Brian Farquhar informed the Committee that this is the third year for this event.

It was Moved and Seconded

That the application from Lifesport Coaching requesting the use of the Cowichan Valley Trail between Sooke Lake Road and the Kinsol Trestle for the 2009 Shawnigan Lake Half Marathon Event on May 24<sup>th</sup>, 2009, be approved, subject to the following conditions being adhered to:

1. A copy of a \$5,000,000 liability and indemnification insurance be provided by the company and event organizers which covers the event and which also identifies the Cowichan Valley Regional District as a named insured.
2. Confirmation that event participants have signed a waiver indemnifying the CVRD for the portions of the race that are within lands under the management of the Regional District.
3. Confirmation that written approvals have been received by the organizers from the Ministry of Transportation Finance Authority and Terasen Gas for use of the former railway corridor, including approvals to have the access gates along the corridor open for the duration of the event.
4. A Course Marshall Plan is submitted prior to the event for CVRD review and approval, which shall ensure any gates along the Cowichan Valley Trail that are temporarily opened are appropriately manned during the entire event to prevent unauthorized access to the trail corridor.
5. Confirmation that there will be appropriate flag persons at all road crossings along the trail corridor.

MOTION CARRIED

0000 3

**PUBLIC QUESTIONS**      There were no questions from the public.

**CLOSED SESSION**      It was Moved and Seconded  
That the meeting be closed to the public in accordance with the Community Charter Part 4, Division 3, Section 90(1), subsections as noted in accordance with each agenda item.

MOTION CARRIED

The Committee moved into Closed Session at 4:25

**MINUTES**      It was Moved and Seconded  
That the minutes of the Closed Session Parks Committee Meeting of July 23, 2008, be accepted.

MOTION CARRIED

**RISE**      It was Moved and Seconded  
That the Committee rise without report.

MOTION CARRIED

**ADJOURNMENT**      It was Moved and Seconded  
That the meeting be adjourned.

MOTION CARRIED

The meeting adjourned at 4:26 pm.

\_\_\_\_\_  
Chair

\_\_\_\_\_  
Recording Secretary



RI

**STAFF REPORT**  
**PARKS COMMITTEE MEETING**  
**OF FEBRUARY 11, 2009**

**DATE:** February 11, 2009 **FILE NO:**

**FROM:** Tanya Soroka, Parks Planning Technician, Parks & Trails Division  
Parks, Recreation & Culture Department

**SUBJECT:** Application for the Built Environment and Active Transportation (BEAT) Community Planning Grant through the Union of BC Municipalities

---

**Recommendation:**

That an application be made for a \$25,000 Built Environment and Active Transportation (BEAT) Community Planning Grant to update and expand, with a regional focus, the 2000 Draft Trail Network and Cycling Plan.

**Purpose:**

To inform the Committee of funding available through the Built Environment and Active Transportation (BEAT) Community Grants Program.

**Financial Implications:**

There are no matching funds required for this grant.

**Interdepartmental/Agency Implications:**

Preparation of the updated plan would be inclusive of involvement of the four member municipalities (City of Duncan, Municipality of North Cowichan, Town of Lake Cowichan and Town of Ladysmith).

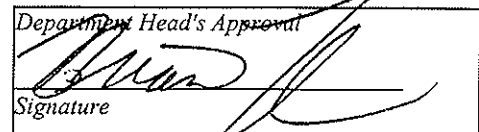
**Background:**

In 2000, the CVRD, District of North Cowichan and the City of Duncan worked together with Lanarc Consultants Ltd to prepare a "Draft Trail Network and Cycling Plan", which integrated walking trails and cycling connections between several CVRD Electoral Areas and the two Municipalities, including connections to the Cowichan Valley Trail (Part of the Trans Canada Trail). Since the initial Plan was completed in 2000, the CVRD has established additional local trail networks in Electoral Areas outside the scope of the 2000 Trail Network and Cycling Plan.

The goal of preparing this updated Regional Trail and Cycling Network Plan is to integrate existing local area trail plans (those in place within several Electoral Areas and existing Municipal Plans), and identify gaps towards the creation of an expanded region-wide trail and cycling network strategy, building upon the initial objectives and vision of the plan prepared in 2000.

Submitted by,

Tanya Soroka, Parks Planning Technician  
Parks and Trails Division  
Parks, Recreation and Culture Department





January 30, 2009

Local Government Program Services  
Union of BC Municipalities  
545 Superior Street  
VICTORIA, BC, V8V 1T7

Dear Sir/Madame:

**Re: Submission of Expression of Interest for the Built Environment and Active  
Transportation Community Planning Grant**

---

Please find attached the Cowichan Valley Regional District Parks Divisions' Expression of Interest for the Built Environment and Active Transportation Community Planning Grant. I look forward to hearing back from you once your review process is complete.

I can be contacted by email at [tsoroka@cprd.bc.ca](mailto:tsoroka@cprd.bc.ca) or by telephone at 250-746-2620.

Thank you.

Sincerely,

Tanya Soroka  
Parks Planning Technician  
Development Services Department

TS/lz  
Attachment

# **EXPRESSION OF INTEREST**

## **UPDATE the 2000 DRAFT TRAIL NETWORK AND CYCLING PLAN**

### **For the Cowichan Valley Regional District**

#### **Background and Description of Existing Draft Plan**

The Cowichan Valley Regional District (CVRD) is located on southern Vancouver Island between the Capital Regional District and the Nanaimo Regional District. The region's population of just over 70,000 live, work and recreate within the Regions' four municipalities and smaller communities across nine electoral areas.

In 2000, the CVRD, District of North Cowichan and the City of Duncan worked together with Lanarc Consultants to prepare a "Draft Trail Network and Cycling Plan", which integrated walking trails and cycling connections between several CVRD Electoral Areas and the two municipalities, including connections to the Cowichan Valley Trail (Part of the Trans Canada Trail). A number of the trail connections that were proposed at that time have since been constructed, and changes in alignment may have occurred. The original plan included a public consultation process with community input throughout the preparation of the Plan. However, recognizing limitations of the 2000 Plan was the lack of more detailed parks and trails plans at the local level, primarily within the unincorporated Electoral Areas.

Since the initial Plan was completed in 2000, the CVRD has established additional local trail networks in Electoral Areas outside the scope of the 2000 Trail Network and Cycling Plan. These connections were acquired through donation, land purchase and land dedications as part of re-zoning and subdivision developments. In addition the CVRD has prepared the following Parks and Trails Master Plans:

- Regional Parks and Trails Master Plan (2007),
- Electoral Area D - Cowichan Bay Community Parks and Trails Master Plan (2008),
- Electoral Area A - Mill Bay/Malahat Community Parks and Trails Master Plan (2008),
- Electoral Area C - Cobble Hill Community Parks and Trails Master Plan (2009),
- Electoral Area B - Shawnigan Lake Community Parks and Trails Master Plan (2009).

The District of North Cowichan has also acquired various trail connections through re-zonings, gifting and through subdivision. Since 2000, the District of North Cowichan has also completed a "Proposed West Chemainus Greenway Plan and Trail System" that will provide connections between local neighbourhoods and ultimately to the Cowichan Valley Trail (Trans Canada Trail).

#### **Goals:**

The goal of preparing an updated Regional Trail and Cycling Network Plan is to integrate existing local area trail plans (those in place within several Electoral Areas and existing Municipal Plans), and identify gaps towards the creation of an expanded region-wide trail and cycling network strategy, building upon the initial objectives and vision of the plan prepared in 2000.

#### **Steps proposed to update the existing Plan:**

To proceed with updating the 2000 Plan is timely, building upon public participation and support of recent local area parks and trails master planning initiatives which do provide significant sources of community ideas and opportunities for broadening these local interests into regional network connections across communities, from Mill Bay/Cobble Hill in the south to the lake communities along the shores of Lake Cowichan to the west, and from the populous centre of Duncan/North Cowichan to the oceanside communities of Saltair, North Oyster and the Town of Ladysmith. The updated plan will serve as a catalyst to encourage ongoing partnerships between these local governments across the region, hand-in-hand with active local community groups and First Nations communities to

build and maintain strategic regional trail and cycling pathway connections which link our regional community together for both the health and wellness benefits of residents within the region, along with creating expanded recreation tourism opportunities for local businesses and tour operators.

**Step 1: Retain Consulting Services** to support available Regional District resourcing to undertake background work compilation, analysis of existing opportunities and future potential, preparation of updated draft plan for review and production of final Regional Trail and Cycling Network Plan. Draft goals and objectives to guide updating the plan inclusive of consulting activities with member municipalities, community/interest groups, First Nations and the recreation tourism sector within the Cowichan Region.

**Step 2: Undertake background work compilation**, including existing local area parks and trails plans and related materials, information from the draft 2000 Plan, available information and plans from member municipalities and other agencies (in particular the Ministry of Transportation and Infrastructure, plans/programs/incentives as related to rural road network opportunities for cycling connection.)

**Step 3: Undertake consultation activities** with member municipalities, interest groups, First Nations, community organizations, agencies and recreation tourism sector on opportunities and priorities for expanded trail and cycling links and connection which contribute to establishing a broader regional trail and cycling network targeting recreation, recreation-tourism and cycling commuter goals for the Region.

**Step 4: Prepare the Cowichan Valley Regional Draft Trail Network and Cycling Plan**

**Step 5: Provide for a public open house** to present the draft plan and allow the opportunity for public input into the Plan and make any changes on the Draft Plan before final preparation.

**Step 6: Preparation of the final plan** for consideration for adoption by the Regional Board.

#### Potential Partners:

The District of North Cowichan, City of Duncan, Town of Lake Cowichan, Town of Ladysmith, Local First Nations (i.e. Cowichan Tribes) and the Ministry of Transportation and Infrastructure will partner with the Cowichan Valley Regional District in the preparation of this updated Regional Trail Network and Cycling Plan.

#### Draft Budget:

Process	Budget Amount
Background work compilation	\$2,500
Compile Existing Framework	\$3,000
Strategic Consultation	\$2,500
Analysis, input and preparation of Draft Plan	\$14,000
Open House	\$1,000
Final Plan compilation	\$2,000
Staff Administration	In kind
<b>Total budgeted amount</b>	<b>\$25,000</b>

#### Contact Information:

##### Cowichan Valley Regional District

Tanya Soroka, Parks Planning Technician

175 Ingram Street, Duncan, BC, V9L 1N8, (Phone): 250-746-2620, (Email): [tsoroka@cvrld.bc.ca](mailto:tsoroka@cvrld.bc.ca)



R2

## STAFF REPORT

### PARKS COMMITTEE MEETING OF FEBRUARY 11, 2009

**DATE:** February 11, 2009 **FILE NO:**

**FROM:** Dan Brown, Parks Trail Planning Technician  
Parks, Recreation & Culture Department

**SUBJECT:** Cross Country Mountain Bike Race Event Request for Cobble Hill Mountain Recreation Area

---

#### **Recommendation:**

That the application from The Experience Cycling Club to hold a cross-country mountain bike race on designated trails within the Cobble Hill Mountain Recreation Area on Sunday, May 10, 2009, be approved subject to the following conditions:

1. Proof of the \$5,000,000 liability insurance that the company has to cover the event which also identifies the CVRD as an additional insured,
2. A damage deposit of \$500 must be provided to the CVRD for confirmation that the company will clean up all garbage and fix any damaged trails on the race route upon completion of the event and that all racers will stay on designated trails identified on CVRD parkland.
3. Confirmations that there will be notices of the even posted along the trail in advance of, and during the day of, the event that will advise other trail users of the race.

#### **Purpose:**

To consider a request from the Experience Cycling Club to host a cross-country mountain biking race at the Cobble Hill Mountain Recreation Area.

#### **Financial Implications:**

N/A

#### **Background:**

Each year the Experience Cycling Club hosts a local cross-country mountain bike race as part of the Island Cup Racing Series. The Island Cup Series is comprised of between 10 and 15 races annually and take place all over Vancouver Island. Typically these races draw between 30 and 90 racers. In 2008, the first year the race was hosted at Cobble Hill, there were 32 entrants and feedback was very positive, so an increase in the numbers is anticipated. This year the local Experience Cycling Club has proposed to operate their local race at Cobble Hill Mountain Recreation Area on Sunday May 10, 2009.

Each participating racer must be a member of a club associated with Grass Roots Mountain Bike Association and are required to sign a waiver naming all land managers involved, thereby

0000 9

preventing legal proceedings should an accident occur. The club also holds \$5,000,000 Comprehensive General Liability and \$5,000,000 General Aggregate insurance for every race, naming all land managers on whose lands the event takes place as named insured in the insurance policy.

The races are low impact and use only a portable generator to meet the electrical requirements of the race. Furthermore volunteer marshals are located around the race route to aid in the smooth operation of the race. The race route is patrolled at the end of the day and garbage, flags or arrows that have been left are removed. Furthermore, the organizers are committed to retrace the race route once again within 48 hours to complete any required trail repairs as a result of the race. Race officials have confirmed that qualified first aid attendants will be located throughout Cobble Hill Recreation Area for the duration of the race.


The schedule will be approximately 7 hours as follows:

- 9 a.m. - Volunteers will begin setting up
- 11 a.m. - Registration at Quarry Nature Park
- 12 p.m. - Race begins
- 3 - 4 p.m. - Approximate completion of Race followed by awards and clean-up of signage and trails

Staff has reviewed the proposal and has no concerns with the event as proposed. This application will also be forwarded to the Cobble Hill Parks and Recreation Commission with respect to the using Quarry Nature Park, an Electoral Area C – Cobble Hill Community Park, as the event staging area.

Submitted by,

Dan Brown,  
Parks Trail Planning Technician  
Development Services Department

Department Head's Approval:   
Signature

DB/mca  
Attachments

000010



## **2<sup>nd</sup> Annual Cobble Hill Classic Mountain Bike XC Race Proposal**

**Sunday May 10<sup>th</sup>, 2009**

**Race starts at 12 pm,  
Volunteers on Site 9 am thru 4 pm**

### **Proposal**

The purpose of this proposal is to seek permission for land use from the landowners that constitute the area known as Cobble Hill Mountain. The request for the land use is to host a cross country mountain bike race.

Each year the Experience Cycling Club (ECC) holds a cross country mountain bike race as part of the Island Cup Series ([www.islandcupseries.com](http://www.islandcupseries.com)). The Island Cup is comprised of 10-15 races across Vancouver Island, hosted by local cycling clubs in their respective areas. Typical attendance at the races can range, depending on the location, course design, and conflicting race calendars. The number of races can range from 30 to 90 riders. In 2007, our race attracted 45 entrants, and in 2008, the first year the race was hosted at Cobble Hill, there were 32 entrants. The decreased number in 2008 can be attributed to the conflicting race schedules (there was a BC Cup race held the same weekend on the Mainland, and a Half Ironman Triathlon in Shawnigan Lake.)

There are currently no conflicts with other race calendars, and positive feedback from racers at the Cobble Hill venue in 2008, so we expect the numbers to be closer to the 2007 event.

### **Participation**

The race fees are kept low to encourage participation and ECC, as a non-profit club, donate any surplus revenue to a notable charity or youth program at the end of the year.

The intention (depending on the number of participants) is to have the following categories; a kids race on the lower portion of the mountain, a beginners race which will have an shortcut to avoid some of the total climbing, an intermediate race, and an expert race.

The participants, who must be a member of a cycling club associated with the Grass Roots Mountain Bike Association (GRMBA), are all required to sign a waiver that

would name all land owners and managers involved preventing legal action should an incident occur. Each landowner named in the insurance policy issued for the race is covered by a substantial **\$5,000,000 General Aggregate and \$5,000,000 in Comprehensive General Liability**. The full insurance policy can be viewed at [www.grmba.ca](http://www.grmba.ca).

### **Impact**

Our races are very low impact, we use a portable generator to power the registration area. We use volunteer race marshals where our flagging and arrows are insufficient on the trail or at intersections. We have Cowichan Search and Rescue on hand at key locations. All traces of our presence (litter, directional flagging, arrows and tape) are removed by the organizers and volunteers at the conclusion of the race. We also travel the entire course within 24 hours to repair any trail damage the race may have inadvertently caused.

### **Other Users**

The trail network on Cobble Hill Mountain attracts many different users. ECC plans to post signage at the main entrances well in advance of the race day to notify users of the upcoming event. Additionally we intend to speak with other organized and frequent users (local horse stables) prior to the event. We will use event signs, set up on the morning of the event so that other users are aware of what is going on. All racers will be cautioned that it is NOT a closed race course and they may encounter other users.

### **The Course**

The start/finish area will be at the base of the mountain in the Quarry Nature Park. It is understood that a mountain bike practice park is in the process of being created so our actual start/finish area may be adjusted slightly to accommodate this welcome addition to the area. ECC will be sensitive to the current state of the trails and adjust the course on race day if necessary to protect wet or eroded areas.

The plan includes marshals working at the shortcut intersection where the beginners split away from the intermediate/expert course. This same intersection will also have a short section (100 feet) of two-way traffic on the intermediate/expert course. This section is on a wide, hard-packed fire road that will also be well flagged to direct races in the proper direction. Marshals and Cowichan Search and Rescue, will provide logistical and medical aid at key locations.

Beginners will ride one partial lap (5.2 km), intermediates will complete two with experts doing 3 circuits (Full laps are 6.4 km and the slightly more challenging due to greater elevation gain). Typically race categories are run concurrently, with the faster

categories leaving slightly ahead of the slower ones. All racers should complete the course between 35 minutes to 2 hours (depending on the category and number of laps). Our entire operation window will be approximately 7 hours. Volunteers will arrive to begin set-up at 9 am, registration will commence at 11 am, the races starting at 12 pm, awards and cleanup will begin as soon as the last rider has crossed the finish line. The re-ride of the entire course will be done within 24 hours to determine if any maintenance needs to be done.

ECC is hoping you will give our request due consideration and allow our club to use Cobble Hill Mountain as the venue for our cross country mountain bike race. Contact me if you have any questions or concerns.

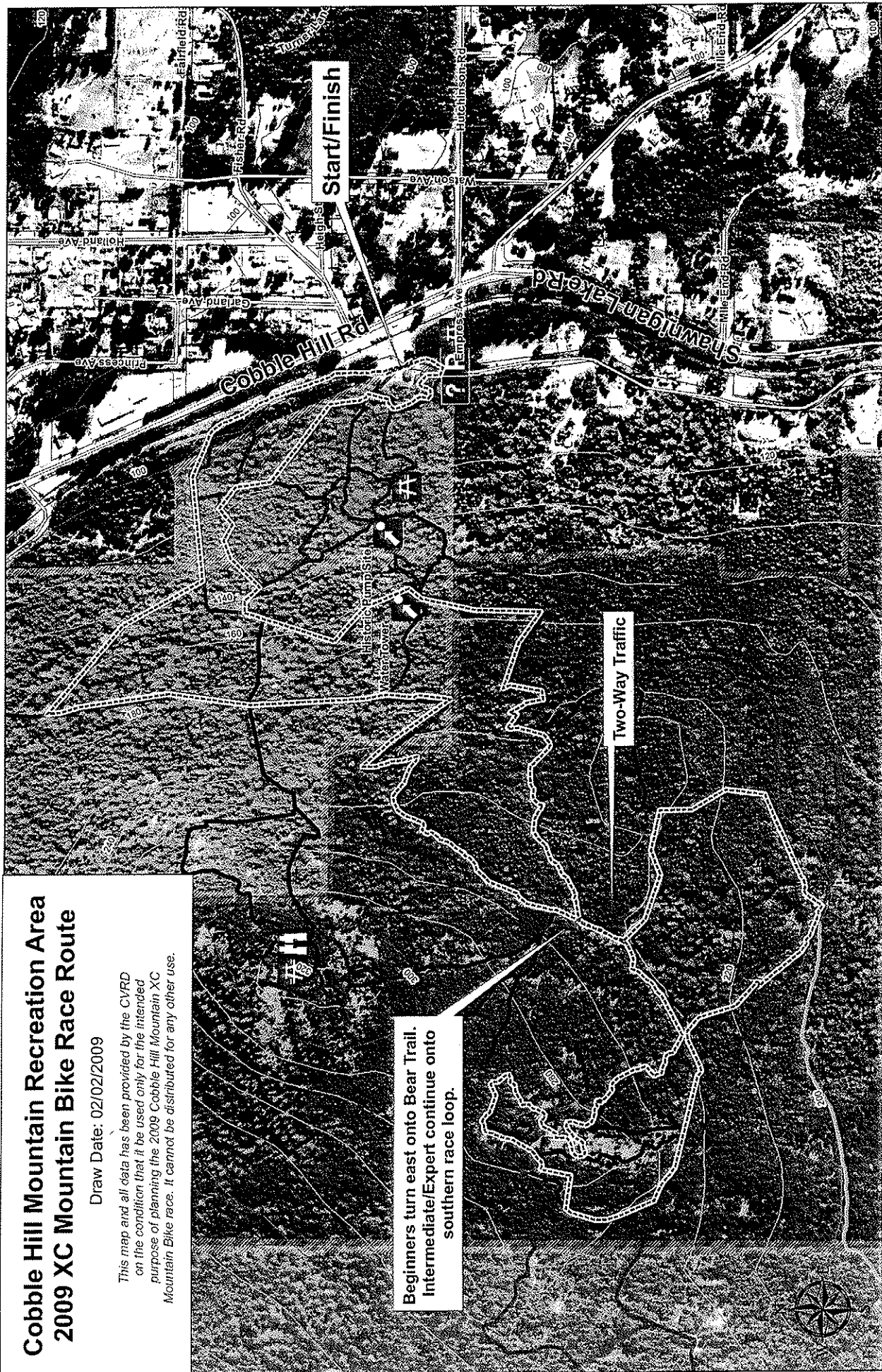
Best regards;

Mike Pollock  
Experienced Cycling Club  
MTB Race Organizer  
[pollock.mike@telus.blackberry.net](mailto:pollock.mike@telus.blackberry.net)

# **Cobble Hill Mountain Recreation Area 2009 XC Mountain Bike Race Route**

Draw Date: 02/02/2009

*This map and all data has been provided by the CVRD on the condition that it be used only for the intended purpose of planning the 2009 Cobble Hill Mountain XC Mountain Bike race. It cannot be distributed for any other use.*





R-3

## STAFF REPORT

### PARKS COMMITTEE MEETING OF FEBRUARY 11, 2009

**DATE:** February 11, 2009 **FILE NO:**

**FROM:** Brian Farquhar, Manager, Parks & Trails Division  
Parks Recreation & Culture Department

**SUBJECT:** Island Corridor Foundation E&N Rail Trail Standards and Guidelines Update

---

**Recommendation:**

That this report be received for information.

**Purpose:**

To update the Parks Committee on the joint initiative of the five Regional Districts along the E&N Railway right-of-way in partnership with the Island Corridor Foundation and Southern Railway to establish "rail with trail" standards and guidelines specific to future trail development within the rail corridor.

**Financial Implications:**

The 2009 Regional Parks Budget identifies \$200,000, plus an additional \$200,000 from the Federal Gas Tax and a further \$200,000 from the Island Coastal Economic Trust for several trail construction components on the Cowichan Valley Trail, including sections within the E&N railway right-of-way. The 2009 Regional Parks budget also includes a financial contribution in the order of \$7,000 towards development of the rail trail standards by the consulting team retained, with funding contributions also from Capital Regional District, Regional District of Nanaimo and Comox Valley Regional District.

**Interdepartmental/Agency Implications:**

This project involves the five Regional Districts along the E&N Railway corridor (Capital Regional District, Cowichan Valley Regional District, Regional District of Nanaimo, Comox Valley Regional District and Alberni-Clayoquot Regional District, along with the Island Corridor Foundation). The Island Corridor Foundation supports development of multiple compatible uses within the E&N railway corridor, including non-motorized trail development.

**Background:**

At the June 2008 Parks Committee meeting, the Committee endorsed the joint Regional District initiative to fund preparation of rail trail standards and guidelines in partnership with the Island Corridor Foundation and Southern rail specific to trail development within the E&N Rail right-of-way. The cost of the project to develop the standards through a consulting contract with

Lanarc Consultants and Newcastle Engineering of Nanaimo is approximately \$22,000, with the costs shared by four regional districts. The standards and guidelines are intended to define the type of trails and safety/operational design criteria for alignment of trails within the railway corridor

000015

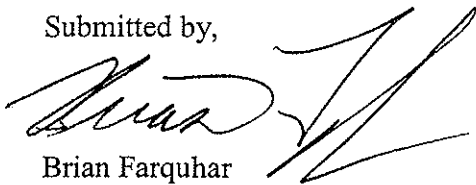
(typically 30 metres in width, except in the Capital Regional District where the width of the corridor is generally 15 metres) with active railway tracks. There are numerous examples of "Rails with Trails" in North America and Europe from which similar examples are being assessed to "tailor fit" standards and guidelines to the E&N Railway corridor. The standards and guidelines will be applicable to all communities along the E&N and would be the basis for any local government making application to ICF to construct and maintain a non-motorized trail within the corridor.

Several meetings of the collective working group (Regional Districts, ICF and Southern Rail) have transpired since fall 2008 and the consulting team retained through ICF is expected to complete a final draft set of rail trail standards for review by all parties in the coming weeks. Key aspects of the emerging rail trail standards identify urban (i.e. within Capital Regional District) versus rural (i.e. Cowichan Valley) requirements, given different types of use (paved trail versus gravel trail) and level of use (higher use level expected in urban environments). The rail trail standards will also include guidelines and requirements for trail crossings and signage (both safety and public awareness/information).

It is anticipated the standards will be finalized in advance of 2009 work identified for the Cowichan Valley Trail section to be constructed within the E&N Railway corridor south of the Chemainus Train Station in partnership with the Chemainus Rotary Club. These standards will also be applicable to the joint rail trail project initiated by the City of Duncan and North Cowichan to link the Duncan Train Station with the new Cowichan Commons Mall. CVRD Parks is providing staff resource support to our member municipalities with aspects of trail design, layout and construction requirements.

In addition to the CVRD's Cowichan Valley Trail Initiative, the Capital Regional District is embarking on a significant trail development within the E&N corridor between Esquimalt and Langford. Both the Regional District of Nanaimo and Comox Valley Regional District are also interested in opportunities for trail development within the rail corridor. Alberni-Clayoquot Regional District has also expressed interest in possible use of portions of the rail corridor section, which connects to Port Alberni. The jointly funded project provides a cost-savings benefit to the CVRD, as the trail standards and design work would otherwise still have to proceed as part of the Cowichan Valley Trail Initiative project to allow these sections of trail to proceed. The additional benefit is the opportunity to collaborate with the other respective regional districts in working with the Island Corridor Foundation to come up with a set of rail with trail standards and guidelines that fit with the trail objectives of Island communities along the rail corridor.

Submitted by,



Brian Farquhar  
Parks and Trails Manager  
Parks, Recreation and Culture Department

BTF/mca



R4

## STAFF REPORT

### PARKS COMMITTEE MEETING OF FEBRUARY 11, 2009

**DATE:** February 11, 2009

**FILE NO:**

**FROM:** Ryan Dias, Parks Operations Superintendant,  
Parks, Recreation & Culture Department

**SUBJECT:** Cowichan Valley Trail Completion Initiative

---

#### **Recommendation:**

That this report be received for information purposes.

#### **Purpose:**

To inform the Committee of trail work in 2009 on the Cowichan Valley Trail Completion Initiative Program.

**Financial Implications:** N/A

**Interdepartmental/Agency Implications:** N/A

#### **Background:**

The Cowichan Valley Trail Initiative is a 120 km multi-use trail route linking communities throughout the Cowichan Valley Regional District, including planned extensions to the Galloping Goose Trail in the Capital Regional District and the Trans Canada Trail within the Regional District of Nanaimo. The Trail Route encompasses both "Rail to Trail" along former railway rights-of-way and "Rail with Trail" for sections of the trail within the Island Corridor Foundations active E&N Corridor.

Recent Cowichan Valley Trail upgrades started in 2004/05 under the Provincial Spirit of 2010 "Rails to Trails" Funding Partnership Program between CVRD Parks and Tourism BC, the Province of BC, the federal Western Economic Diversification Program and the Trans Canada Trail (TCT) Foundation. Both Grant funds and Regional Parks funding contributed toward the upgrade of two major sections of the TCT within Regional District boundaries. Initial development was achieved on the Glenora Staging Area Community Park as a major gateway to the Cowichan Valley Trail (CVT) and relocation/restoration of the former Lake Cowichan Forest Ranger Station to the western terminal of the CVT/TCT within the Town of Lake Cowichan. A total of \$560,000 was spent on these trail projects, with the CVRD contributing \$78,000. A 14 km section in Shawnigan Lake from Sooke Lake Road to the Kinsol Trestle was upgraded to meet Type 1 CVRD Trail Standards. Works included brushing and trail widening to 10 feet, grading, culverting, access control by installing gates and signage at all intersecting roadways, and trail resurfacing for the entire 14 km section. Funding contributions also allowed for basic improvements to a 14 km section of the trail starting on the North side of the Kinsol Trestle. Only subgrade preparation and water control were addressed within the program budget.

000017

In October 2008, the Island Coastal Economic Trust (TCET) formally announced funding by ICET of \$1,743,891 for the Cowichan Valley Trail initiative of which \$1 million is earmarked for the Kinsol Trestle Rehabilitation and the remaining \$743,891 is targeted towards completion of the Cowichan Valley Trail. The trail initiative looks to complete 8 trail components over a 4 year period (2009 – 2012), including links from:

- Ladysmith to the Regional District of Nanaimo
- A “Rail with Trail” between Chemainus and Ladysmith
- A new trail from Duncan to Chemainus/Crofton
- Upgrades to the Rail to Trail section from Lake Cowichan to North Cowichan, and
- Rehabilitation of the historic Kinsol Trestle.

In addition to the ICET funding the CVRD Board previously approved \$400,000 in federal gas tax funding for the project and matching \$400,000 from the Regional Parks Budget to complete all eight segments. In summary, the funding for the overall project from 2009 – 2012 (as per Board approval of grant funds) is as follows:

<b>Funding Source</b>	<b>2009</b>	<b>2010</b>	<b>2011</b>	<b>2012</b>	<b>Funding Total</b>
<b>New Gas Tax Deal</b>	\$200,000	\$100,000	\$100,000		\$400,000
<b>ICET</b>	\$200,000	\$181,297	\$181,297	\$181,297	\$743,891
<b>Regional Parks</b>	\$200,000	\$200,000	\$171,845	\$171,845	\$743,691
<b>Other Funding</b>			\$200,182	\$143,874	\$344,055
<b>Annual Budget Total</b>	<b>\$600,000</b>	<b>\$481,297</b>	<b>\$653,324</b>	<b>\$497,016</b>	<b>\$2,231,637</b>

**Note:** Work intended for 2008, to the tune of \$600,000 (\$200,000 from ICET, Gas Tax and Regional Parks), was deferred to 2009 due to Board funding priorities with respect to Kinsol Trestle restoration feasibility studies and timing of ICET grant funding announcement.

As part of the overall \$1,743,891 project commitment from ICET, funds in the amount of \$200,000 have been assigned to proposed improvements scheduled for 2009. In addition to the ICET funding commitments, Federal Gas Tax funding will be contributing \$400,000 in total funding towards the Trans Canada Trail initiative. Of the \$400,000 overall commitment, \$200,000 has been identified for proposed improvements in 2009. Between these two funding sources, the CVRD has access to \$400,000 in funding to achieve the 2009 improvements/upgrades as identified in the 5 year financial plan.

The proposed work program for 2009 includes performing upgrades to four of the eight segments identified in the 5 year financial Plan.

**A. Rail to Trail Section - Lake Cowichan to Duncan**

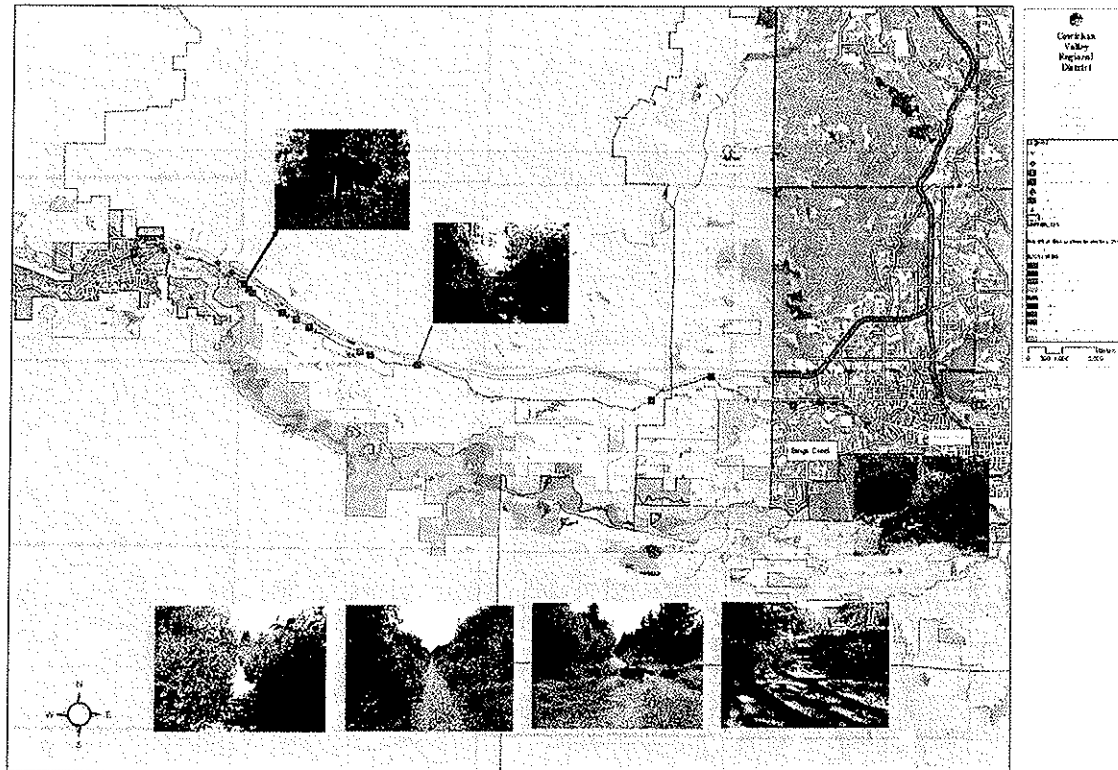
**B. Bings Creek Bridge**

**C. Rail with Trail Section – Chemainus Area**

**D. Bush Creek Crossing**



### A – Rail to Trail Section Lake Cowichan to Duncan



**Description:** This segment of the proposed Cowichan Valley Trail route runs 26.5 kilometres from the Town of Lake Cowichan to Sherman Road in the District of North Cowichan. Planned improvements along this trail for 2009 include re-gravelling segments of the trail, culvert installation, and construction of staging areas, signage, and minor brushing works.

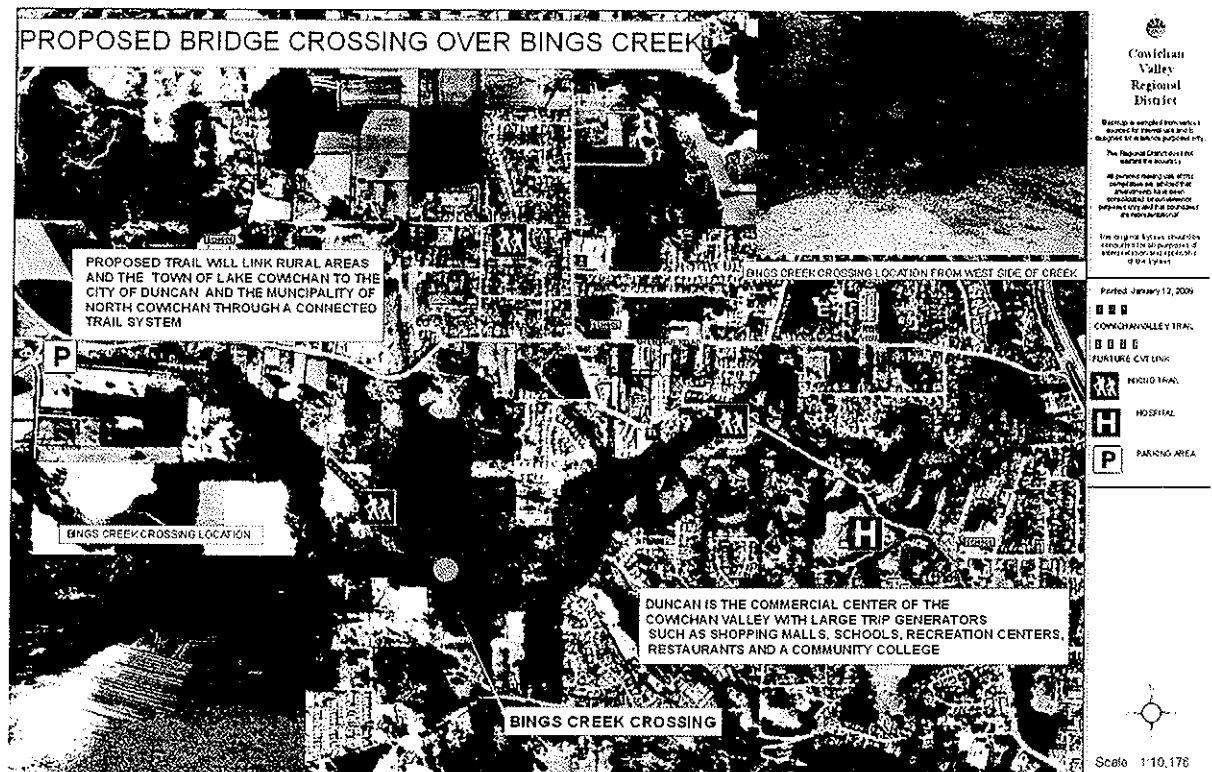
**Timing of Works:**

Approvals, Assessments and Tendering	Feb-April
Site Mobilization and Work Program	May-June

**2009 Budget:** \$214,000

**Agreements in Place – Lake Cowichan to Duncan:** The CVRD has a letter to proceed with Rail-Trail construction from Island Corridor Foundation (ICF) permitting the construction, of trail within this untracked section of E&N rail corridor owned by the ICF. CVRD and ICF are also currently working on a long term rail trail license agreement that will cover CVRD trail development and maintenance within the E&N corridor.

## B – Bings Creek Bridge



**Description:** The former railway bridge over Bings Creek was removed a number of years ago, which requires construction of a new crossing for trail users. This is the only physical limitation to the existing railway corridor in formalizing the trail from the Town of Lake Cowichan to just north of Duncan.

### **Timing of Works:**

Approvals, Assessments and Tendering  
Bridge Construction

Feb-April  
July-August

**2009 Budget:** \$42,000

## C – Rail with Trail Section – Chemainus Area



**Description:** A total of approximately 5.0 kilometres is proposed for new trail construction from the train station in downtown Chemainus, and terminate 5.0 kilometres to the south. The work required is more extensive due to clearing, rough grading, and drainage and subgrade construction in addition to surfacing with the compacted trail gravel mix. The Chemainus Rotary is participating this year in the trail construction as a community project.

### **Timing of Works:**

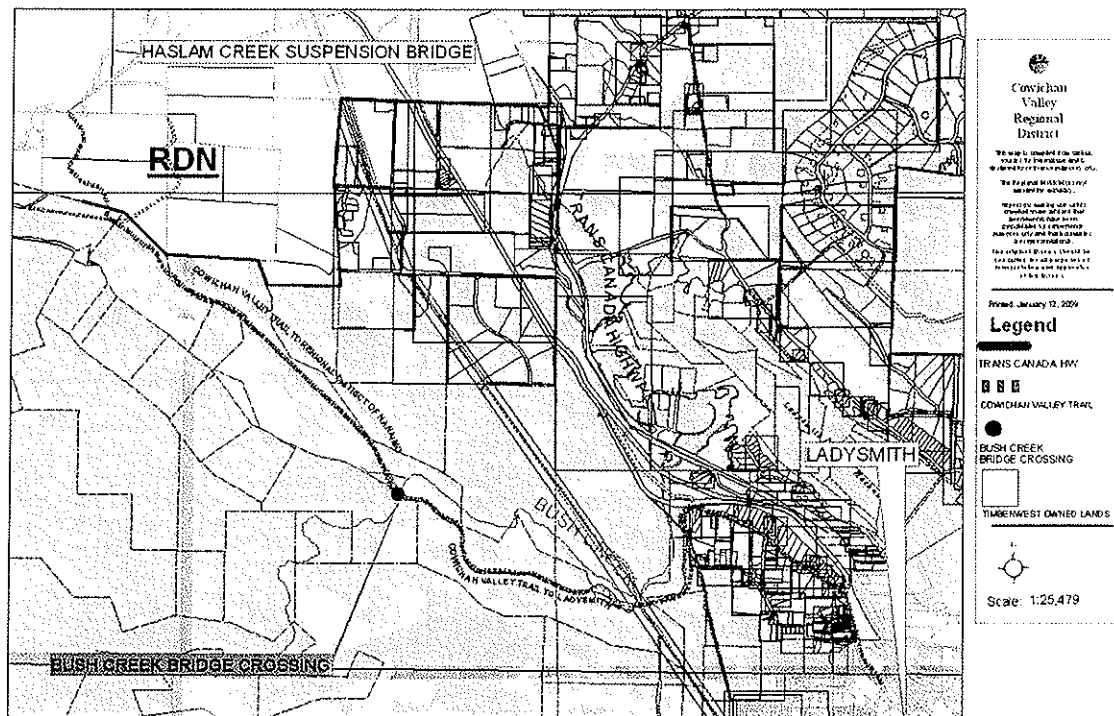
Approvals, Assessments and Tendering	Feb-April
Site Mobilization and Work Program	July August
Volunteer Works	August

**2009 Budget:** \$291,000

**Project Partner:** The CVRD is working closely with the Chemainus Rotary on this project and has already secured a donation of \$10,000 as well as volunteer time as needed.

000021

## D – Bush Creek Bridge



**Description:** The proposed route of the Cowichan Valley Trail from Ladysmith to the Regional District of Nanaimo includes a required bridge crossing over Bush Creek adjacent to the Ladysmith Fish and Game Club's Hatchery. In addition to the bridge, directional signage, gates, and minor improvements would also be completed.

### **Timing of Works:**

Approvals, Assessments and Tendering	Feb-April
Site Mobilization and Work Program	August

**2009 Budget:** \$53,000

**Agreements in Place - Bush Creek Bridge:** The current landowner for the Bush Creek Bridge crossing location and the roadside trail leading to the south side of the future bridge location is Timberwest. The CVRD has an agreement in principle with TimberWest to use this alignment and bridge location for construction, maintenance, and management of the trail. Once the time frame for construction of the bridge and trail are determined this agreement will be signed.

## **Overall Schedule for Works to be completed in 2009**

### **February – April 2009**

In this pre-planning stage staff will be engaged in works including confirmation of approvals and agreements, meeting with stakeholders, trail assessments, tendering and contract awards, as well as budget co-ordination for each individual segment.

### **May-September 2009**

Construction will begin on all segments proposed for 2009, with priority status to be given to the Chemainus Area – Segment 5. All other segments will proceed in this timeframe, and proceed based on ground conditions, fisheries window, and availability of contractors. Works will include brushing, grading, resurfacing where possible, water/drainage control, access control and directional signage. Construction of Bush Creek Bridge and Bings Creek Bridge crossing will occur within the fisheries window, and take place after all necessary permits and approvals have been secured.

### **Project Management**

Similar to the program setup in 2004/05, CVRD Parks staff intend to hire a trail project manager to co-ordinate “on the ground” expertise and contractor supervision in the delivery of the proposed 2009 work program. The trail project manager will work directly with parks staff to ensure project deliverables are being met, contractors are achieving the work on time, and that budget resources are spent in the most cost efficient manner. All budgetary decisions, and resource allocation will be authorized by CVRD Parks staff, with project tracking and reporting performed at key project intervals. A project summary including details of all works achieved, and final cost figures will be presented to the Regional Parks Committee once all works are complete in 2009.

Submitted by,



Ryan Dias  
Parks Operations Superintendant  
Parks, Recreation and Culture Department

RD/mca

Department Head's Approval

Signature



R5

**STAFF REPORT**  
**PARKS COMMITTEE MEETING**  
**OF FEBRUARY 11, 2009**

**DATE:** February 11, 2009

**FILE NO:**

**FROM:** Brian Farquhar, Manager, Parks & Trails Division  
Parks Recreation & Culture Department

**SUBJECT:** Update on the Trails Strategy for British Columbia

---

**Recommendation:**

That this report be received for information.

**Purpose:**

To update the Parks Committee on the progress of the Provincial Trails Strategy Committee work towards developing a Recreation Trails Strategy for British Columbia.

**Financial Implications:**

N/A

**Interdepartmental/Agency Implications:**

Development of a Recreation Trails Strategy for British Columbia is being coordinated through the Ministry of Sport, Tourism and the Arts, with participation of the Ministry of Environment (BC Parks), Ministry of Transportation and Infrastructure and Tourism British Columbia.

**Background:**

At the October 18, 2007, Regional Parks Committee meeting, the Committee approved the appointment of the Parks Manager to the Provincial Trails Strategy Committee, which includes representation from a wide range of motorized and non-motorized interests in recreation trails in BC. The purpose of the Provincial Trails Strategy Committee is to develop and recommend to the provincial government a recreation trails strategy for British Columbia that can provide a framework to guide and coordinate future decision-making to help strengthen the province's trail system for all users.

The Provincial Trails Strategy Committee has met several times over the past year with Ministry staff and their consulting team to advise and provide input on development of a draft provincial trails strategy for review/feedback by trail user groups, community organizations, recreation tourism operators and the general public. As a lead-in to public consultation activities, the Ministry of Tourism, Culture and the Arts hosted an information clinic at the fall 2008 Union of British Columbia Municipalities Convention in Penticton. A copy of the presentation made during the session is attached.

000024

The draft vision of the trails strategy is to establish and maintain:

*“A world-renowned network of sustainable trails, accessible to all, which fosters social, cultural, health, economic and environmental benefits for trail users, communities and the province.”*

Under the draft vision, the strategy’s guiding principles propose to:

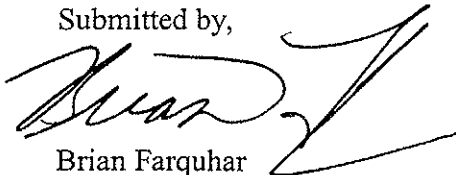
- Build on Partnerships and Collaboration
- Foster Environmental and Cultural Stewardship
- Secure Recreation Opportunities for All Users
- Provide Benefits for Communities and the Province

It is recognized that there are over 30,000 kilometres of recreation trails throughout British Columbia on public lands and that these trails range from formal managed trails under various government jurisdictions to trail networks managed by local non-profit societies, unorganized groups and individuals either with or without some form of tenure or formally recognized tenure (i.e. trail license agreement). The intent of the proposed trails strategy is to develop a framework which encourages and creates greater opportunities for collaboration between various trail users and resource land managers to facilitate a sustainable and world-class trail program across the province.

Through the months of November 2008 and January 2009 Public Information and Open House Sessions were held at various communities across the province, including a session in Nanaimo on November 16<sup>th</sup> to learn about the draft trails strategy and have an opportunity to provide feedback. Through spring 2009 feedback and input will be encouraged as the Trails Strategy Committee, working with Ministry staff and the consulting team continue to refine strategic directions and identify resources and capabilities based on feedback from the consultative process. Following this aspect of the process, the next step will be to finalize the strategy (spring 2009) for provincial approval and implementation.

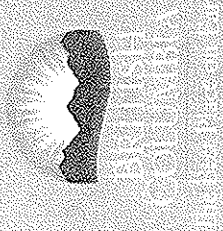
Key aspects from the proposed trails strategy that can provide value to trails programs of the Regional District and within our local communities include provincial legislative tools to approve trails on crown lands, improved legislation, regulations and policy to govern appropriate trail use (both motorized and non-motorized), partnership opportunities/structure for stable trail funding, “best practices” approach to managing trails on private lands and marketing of trails on a provincial level (such as the Provincial Spirit of 2010 Rail Trail program, which actively promotes the Cowichan Valley Trail through Tourism BC).

Submitted by,



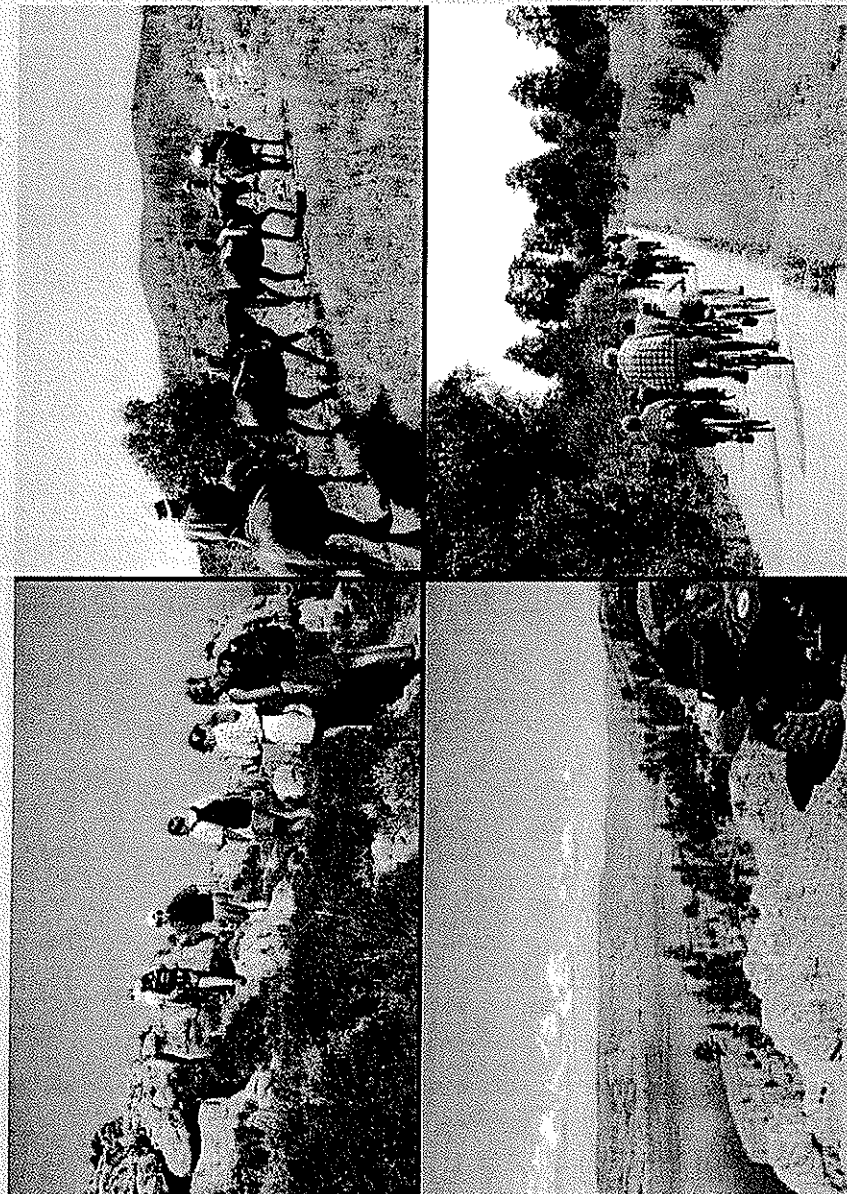
Brian Farquhar  
Parks and Trails Manager  
Parks, Recreation and Culture Department

Attachments  
BTF/mca



# Recreation Trail Strategy for British Columbia

UBCM Convention 2008



**PREPARING THE FOUNDATION FOR THE  
BEST TRAIL NETWORK ON EARTH**





BRITISH  
COLUMBIA  
The Best Place on Earth

## Outline

Recreation Trails in B.C.

The Need for a Collaborative Approach

Recreation Trail Strategy Process

Recreation Trail Strategy Summary

Challenges, Considerations and Insight

000027





**BRITISH  
COLUMBIA**  
The Best Place on Earth



## Extensive trails, diverse use

Over 30,000 kilometres of  
recreation trails estimated in the  
Province of British Columbia



> 10,000 km



> 7,000 km

Regional Districts  
and Municipalities

> 11,600 km



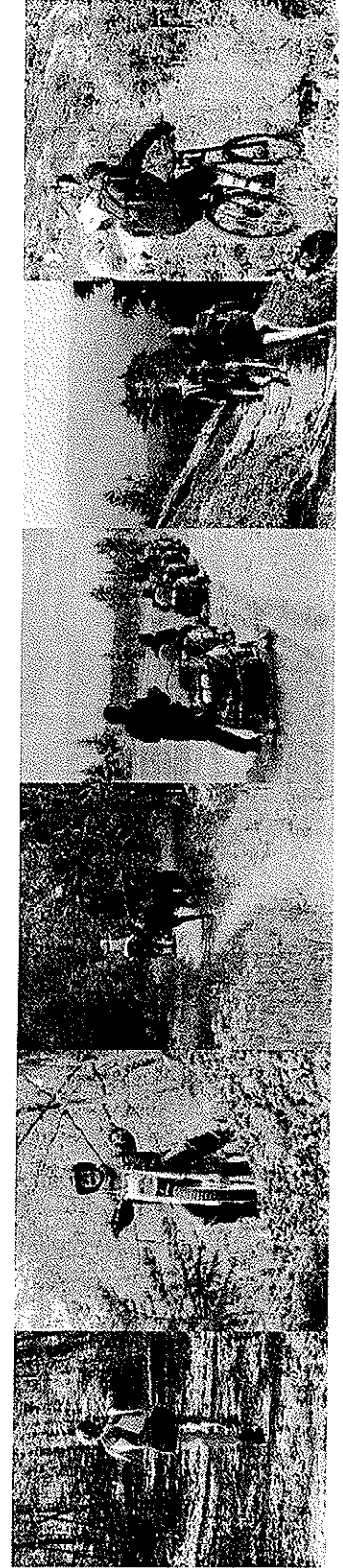
Parks  
Canada

> 850 km



Rail  
Trails

1,029 km





**BRITISH  
COLUMBIA**  
The Best Place on Earth



### 3 significant factors affecting trail management in B.C.:

#### 1. Demographics

- An increasingly active and retired baby boomer generation with time and focus on healthy recreation.

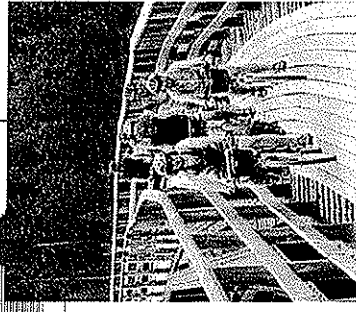
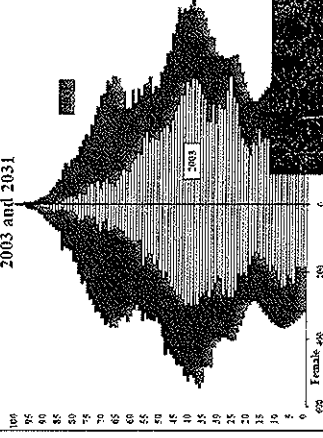
#### 2. Urban/Community Expectation

- Expectations by the public for publicly supported trail infrastructure near developed areas.

#### 3. Technology

- Rapidly advancing technological advances to trail use equipment changing trail use patterns i.e. ATV's and mountain bikes.

Population Age Profile, SLRD South,  
2003 and 2031



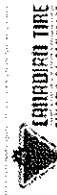
Raja Motorsports ATV

Sale: \$1,399.99

Reg. \$1,599.99

Product # 27-0002-0

- 89 cc, 4-Stroke ATV
- Single-Clutch, air-cooled
- 1.1 gallon (4.1 L) gas tank
- Maximum speed: 40 km/h (25 mph)
- Approximately 11.2 miles (180 km) per tank
- Dual hand brake cables, hydraulic rear brake



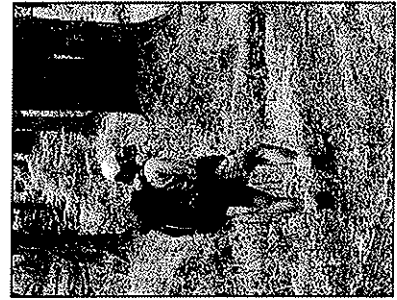
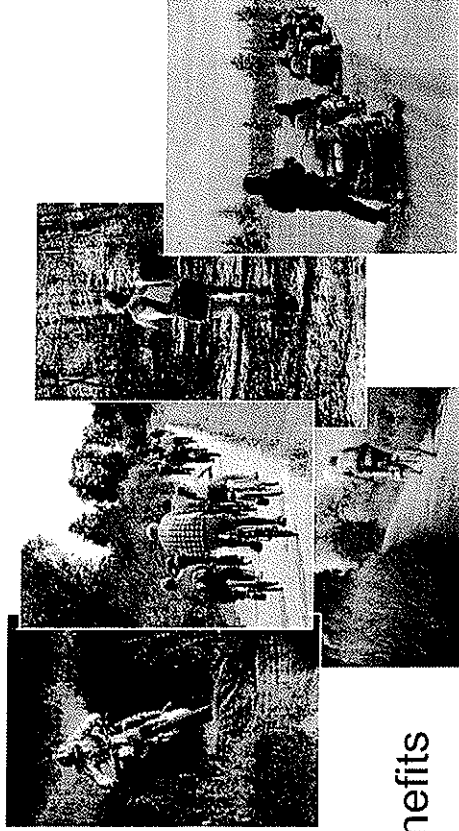


BRITISH  
COLUMBIA  
The Best Place on Earth

## 4 Key Trends ...

### Trends

1. Changing demographics
2. Increasing diversity of users
3. Increasing recognition of economic benefits
4. Increasing transportation role for trails



Increasing expectations, diverse uses and public concern are driving the need for formal pro-active approaches to trail management and *multi-use* trail strategies.



**BRITISH  
COLUMBIA**  
The Best Place on Earth

## Recognizing Economic Potential...

### 1. Sea to Sky Mountain Biking: Economic Impact Study

- \$10.3 Million in non-local spending over 3 month period
- \$1.7 M expenditures to local Squamish business,
- \$ 400,000 Test of Metal expenditures

Source: Mountain Bike Tourism Association.

### 2. Moab, Utah

- \$195 -\$205 per user per trip to Moab
- \$8,422,800 and \$8,770,300 annual corresponding value of slick rock trail

Source: Peter Fix, P. and Loomis, J.

### 3. La Route Verte

- Cyclists spent a total of \$95.4 million related to trail use in 2000.
- People who live near the trail spent over \$24.5 million.

Source: Velo Quebec

### 4. Snowmobiling on Ontario

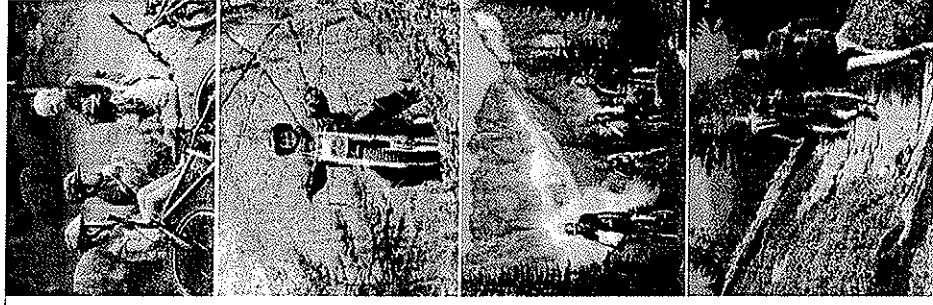
- Total economic activity generated in Ontario by snowmobiling in the 1996/1997 season was over \$900 million.

Source: Ontario Federation of Snowmobile Clubs

### 5. Bruce Trail, Ontario

- More than 410,000 user visits per year, with direct spending on non-durable goods of approximately \$4.4 million - estimated direct and indirect impact of \$10 million.

Source: Schutt, A.M.

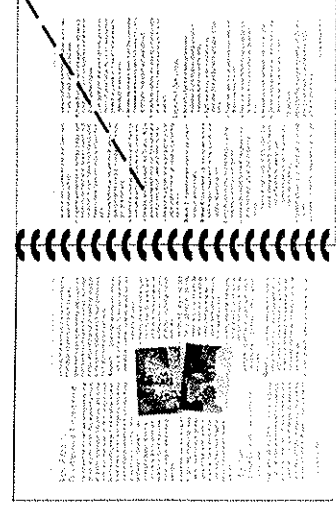


## Identifying the Need for a Collaborative Approach

- ORC recommendations' for 30 years
- Traditional single jurisdiction or single use approach ineffective
- Increasing expectations require more planned, active approach
- Search for the "holy grail" – a sustainable trail network!

---

## Tourism Action Plan



- ▶ Establish a provincial trails program (BC Trails) for both urban and rural trial systems on Crown land.





BRITISH  
COLUMBIA  
The Best Place on Earth

# Trails Strategy for BC

## Phase 1 (2006-2007)

- ✓ Background Report
- ✓ Develop Strategy Process

## Phase 2 (2007-2008)

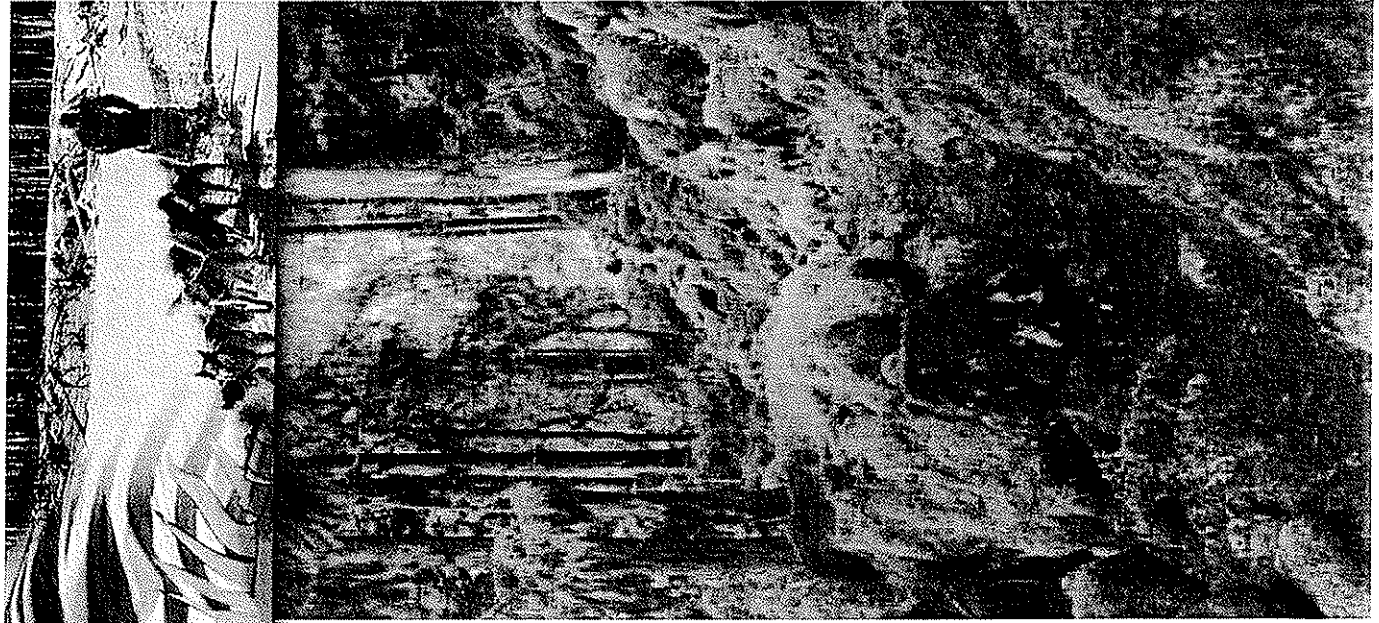
- ✓ Convene Trail Strategy Committee
- ✓ Develop a Trails Strategy for BC
- ☐ Community workshops and open houses

## Phase 3 (2009)

- ☐ Action Plan for Implementing the Strategy
- ☐ Implementation (5-10 years)
- ☐ Trail Advisory Committee

## Phase 4:

- ☐ Monitoring and Update of the Strategy

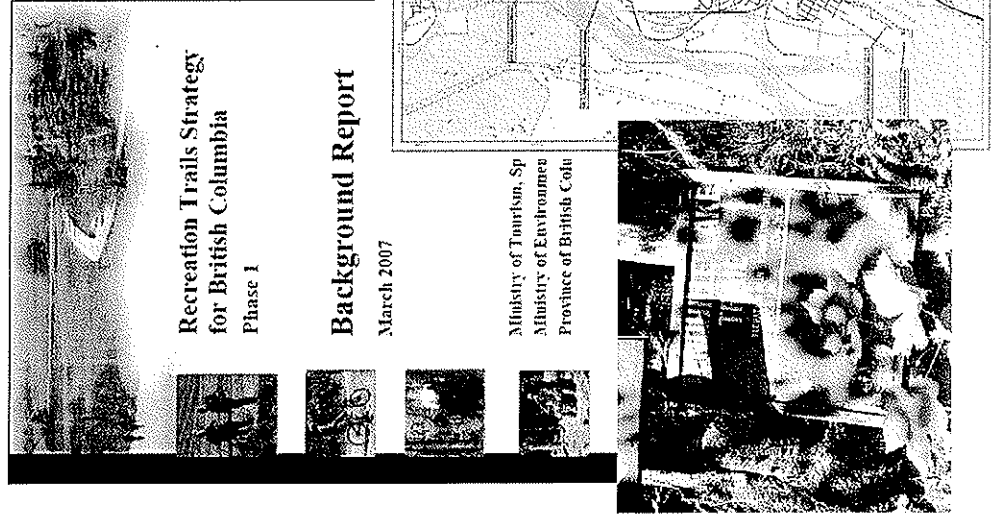




**BRITISH  
COLUMBIA**  
The Best Place on Earth

# Background Report

- ✓ Overview of Existing Trails
- ✓ Stakeholder Survey
- ✓ Legislation and Policy
- ✓ Recreation Trends
- ✓ "Best Models Jurisdictions"
- ✓ Strength, Weakness, Opportunities and Threats Assessment
- ✓ Key Issues
- ✓ Benefits of Trails
- ✓ Prioritizing New Trails
- ✓ Links to Government Initiatives







BRITISH  
COLUMBIA

The Best Place on Earth

# British Columbians surveyed

Survey of Trail Managers, Local Clubs, Stewards  
and Agencies throughout the Province

• 91 Respondents from 76 Organizations

Non-government organizations	Government organizations
10 provincial outdoor recreation organizations 28 local outdoor recreation organizations 7 tourism organizations and companies 2 forest companies 8 academic / outdoor educational institutes	5 provincial government agencies 1 federal government agency 14 local governments 1 First Nation
<b>55 Non-government organizations</b>	<b>21 Government organizations</b>

## Top Ten Issues

1. Access
2. Limited Funding
3. Insurance Liability
4. Environmental Impacts
5. Limited Resources
6. Legislation
7. Trails Information
8. Signage
9. Increasing Trail Use
10. Compliance and Enforcement



**BRITISH  
COLUMBIA**  
The Best Place on Earth

## Trails Strategy Committee

### Non-government

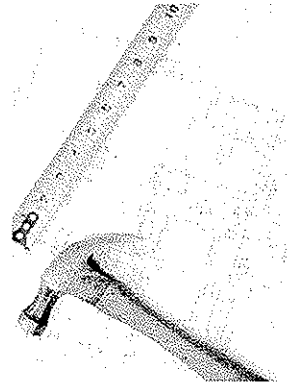
- Hiking/pedestrian - Federation of Mountain Clubs of BC
- Snowmobiles - BC Snowmobile Federation
- ATV's - BC Quad Riders Association
- Dirt Bikes - BC Off Road Motorcycle Association
- Equestrian - BC Horse Council
- Mountain Biking - International Mountain Bike Association
- Transportation Cycling - BC Cycling Coalition
- Outdoor Recreation Council
- Academia, Thompson Rivers University, AT Program

### Government

- Ministry of Tourism Sport and the Arts
- Ministry of Environment, BC Parks
- Ministry of Transportation
- Tourism BC
- First Nations representative
- Union of BC Municipalities

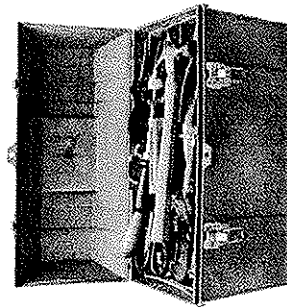


**BRITISH  
COLUMBIA**  
The Best Place on Earth



## Blue Print

- Clearly defines a vision for the Provincial trail
- Provides a map to get there
- Provides a basis for evaluating success



## Tool Box

- A complete set of tools needed to build the vision, implement the Strategy and sustain the trail program.
- Legislation, regulations, policy, plans, standards

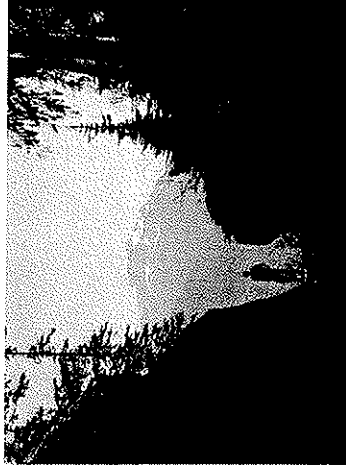


**BRITISH  
COLUMBIA**  
The Best Place on Earth



## VISION

A world-renowned network of sustainable trails, accessible to all, which fosters social, cultural, health, economic and environmental benefits for trails users, communities and the province.



## GUIDING PRINCIPLES

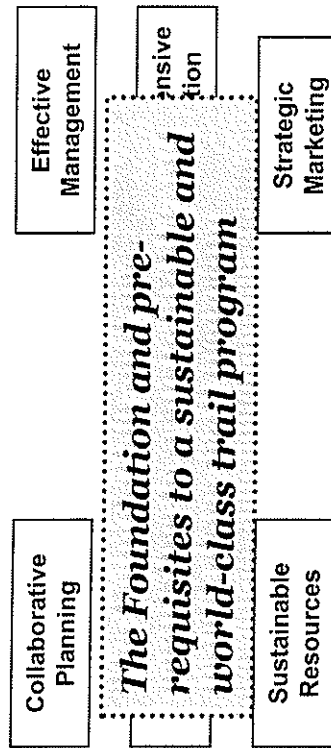
*for a world-class trial system*

1. Build on Partnerships and Collaboration
2. Foster Environmental and Cultural Stewardship
3. Secure Recreation Opportunities for All Users
4. Provide Benefits for Communities and the Province



**BRITISH COLUMBIA**  
The Best Place on Earth

## Key Components



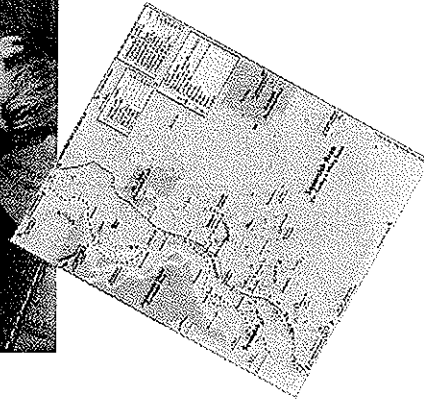
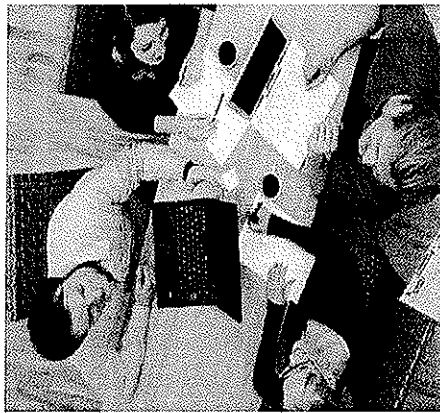
Collaborative Planning	Good Governance	Sustainable Resources	Effective Management	Comprehensive Information	Strategic Marketing
1. Collaboratively develop provincial and local trail system plans that secure opportunities for all trail users  2. Use appropriate legislative tools to approve trails in support of a comprehensive trail network	3. Develop a communication and education strategy to better inform trail users about the existing governance framework  4. Improve legislation, regulations and policy to better manage motorized trail use  5. Enhance recreation opportunities by addressing liability issues	6. Provide a clear and up-to-date catalogue of various funding sources that can support trails  7. Develop a partnership approach to stable funding	8. Consolidate existing trail standards, guidelines and management tools, and ensure they are widely communicated and accessible for agency staff and user groups  9. Ensure the B.C. Trail Program is well integrated with interagency compliance and enforcement services  10. Integrate recreation trail use into resource road decisions  11. Develop a "best practices" approach to managing trails on private land	12. Develop and maintain a comprehensive inventory of trails  13. Undertake a comprehensive survey of trail users	14. Undertake the development of a provincial trails marketing strategy



BRITISH  
COLUMBIA  
The Best Place on Earth

## Implementation

15. Establish a provincial trail advisory body to provide advice on the implementation of the Trails Strategy and the B.C. Trail Program
16. Encourage establishment of local or regional trail committees to support implementation and continuous improvement of the Trails Strategy
17. Develop an implementation plan that identifies specific timelines and responsibilities for implementing the Strategy





## Challenges Insights and Considerations

- Balance of strategic and operational requirements
- Ensuring input from all stakeholders
- Defining the problem and developing solutions/strategies

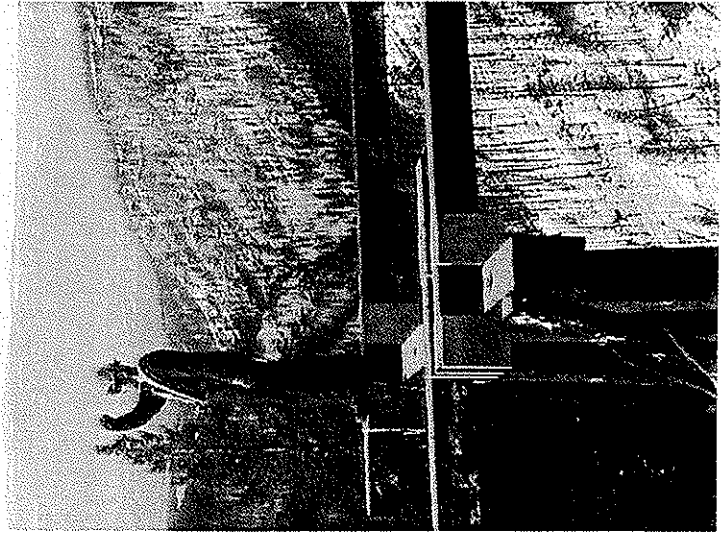


BRITISH  
COLUMBIA  
The Best Place on Earth



## Next Steps

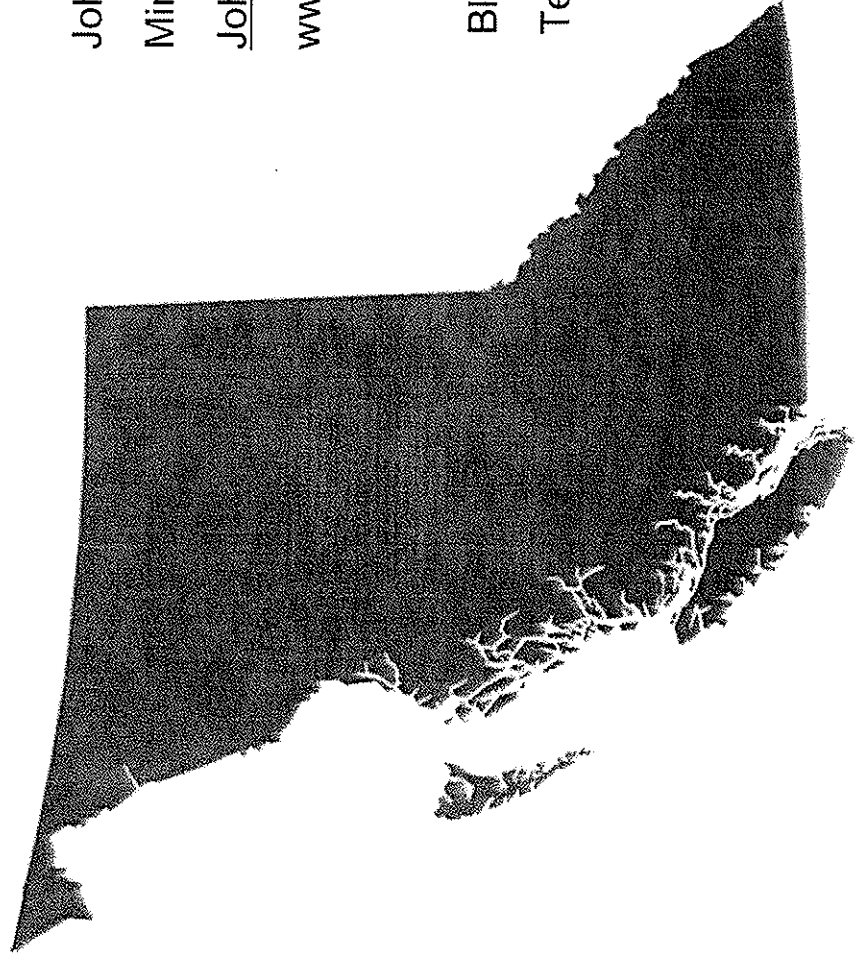
- Gather input and feedback
- Community input and information sharing
- Refine strategic directions
- Identify resources and capabilities
- Finalize Strategy (Spring 2009) and....Implement







BRITISH  
COLUMBIA  
The Best Place on Earth



John Hawkings, Manager Trails  
Ministry of Tourism, Culture and the Arts  
[John.hawkings@gov.bc.ca](mailto:John.hawkings@gov.bc.ca)  
[www.tsa.gov.bc.ca/sites\\_trails/](http://www.tsa.gov.bc.ca/sites_trails/)

Blair Baldwin, Pinnacle Consulting and  
Terje Vold and Associates



R6

**STAFF REPORT**  
**PARKS COMMITTEE MEETING**  
**OF FEBRUARY 11, 2009**

**DATE:** February 11, 2009  
**FROM:** Brian Farquhar, Parks and Trails Manager  
Parks Recreation & Culture Department  
**SUBJECT:** Regional Parkland Acquisition Fund Referendum

**FILE No:**

---

**Recommendation:**

That this report be received for information

**Purpose:**

To provide the Committee a summary of the Regional Parkland Acquisition Fund Referendum process and costs leading up to the referendum held on November 15, 2008.

**Financial Implications:**

The Regional Board at its meeting of August 13, 2008, authorized the expenditure of up to \$87,000 from the Regional Parks budget to fund the administrative costs and public awareness information program associated with holding the region-wide Regional Parkland Acquisition Fund Bylaw referendum in November.

**Interdepartmental/Agency Implications:**

N/A

**Background:**

Further to the Regional Parkland Acquisition Fund Referendum held during the November 15, 2008, Electoral Area/Municipal elections, the following information is provided as a summary of the public awareness information program and costs associated with the information program and referendum administration costs. The Parks Committee at the July 25, 2008, meeting recommended to the Board that the Regional Parkland Acquisition Fund Referendum process include a public awareness information program to provide regional residents with the background information on the purpose of a Regional Parkland Acquisition Fund.

The extent of the public information program undertaken included print-ads, a newsletter and materials made available through the CVRD's website. Sub-regional public open house events were also held, making available information on the adopted CVRD Regional Parks and Trails

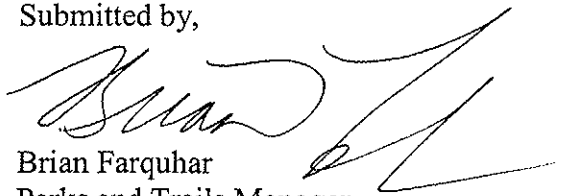
000044

Master Plan and the proposed Regional Parkland Acquisition Fund held during September at several venues across the region. Information displays and handouts were also made available to a number of all-candidate meetings. A copy of the media ads, newsletter and public awareness information panels are attached.

The overall costs of the public awareness information campaign and referendum administration was as follows:

Consultants ( <i>organization of public information and awareness campaign, including open houses</i> )	\$14,100
Graphic Design Work ( <i>open house display materials, newspaper ad layouts, information handouts</i> )	\$4,700
Referendum Legal Ads ( <i>all Valley papers</i> )	\$18,900
Public Information and Awareness Ads ( <i>all Valley papers</i> )	\$16,700
Referendum Election Day Costs	\$14,236
<b>TOTAL COST</b>	<b>\$68,636</b>

Submitted by,



Brian Farquhar  
Parks and Trails Manager  
Parks, Recreation and Culture Department

BTF/mca  
Attachments

**REGIONAL PARKLAND ACQUISITION FUND**

On November 15, 2008 taxpayers throughout the Cowichan Region will be asked to decide if they support creation of a special fund so that unique landscapes across the Cowichan Valley Regional District can be secured in perpetuity as regional parks.

**Vision Statement:**

The people of the Cowichan Region value and wish to secure in perpetuity a network of Regional Parks and Trails to:

- Provide a variety of outdoor recreational opportunities
- Protect natural ecosystems
- Feature representative landscapes
- Link our communities, and
- Enhance livability within the Region.

**Regional Parks Are:**

- Those parks and trails that are created for the benefit of the entire Cowichan Region and are managed by the Cowichan Valley Regional District.
- Funded through the taxation of all nine electoral areas and four municipalities.
- Typically larger, natural landscape areas of value to communities for outdoor recreation and environmental protection.



**Regional Park sites currently managed by CVRD are Sandy Pool Regional Park, Osborne Bay Regional Park, the Cowichan Valley Trail, Spectacle Lake and Chemainus River Parks, and Cobble Hill Mountain Recreation Area.**

**Risks and Challenges:**

- Over 60% of lands in the Cowichan Valley Regional District are privately owned.
- Less than 40% of CVRD land is publicly owned. The majority of these public lands are west of Lake Cowichan. This is a significant contrast to the over 90% public land base Province wide.
- Many significant and favoured informal outdoor locations in the Cowichan Region are located on privately owned lands.
- We are facing uncertainty over continued public access to many of these special spaces due to:
  - Population growth
  - Development pressures
  - Land use changes
  - Access restrictions by private landowners
  - Liability concerns
- Recognizing the need to secure significant spaces in the public interest, the CVRD Board adopted the Regional Parks and Trails Master Plan in 2007 to guide acquisition and management of regionally significant lands of high outdoor recreational and environmental value to the Regional community.

**How are Community Parks Different?**

Community Parks are funded and developed separately by each of the nine electoral areas and four municipalities. They provide a range of local outdoor recreation amenities including community playgrounds, walkways, sport courts, swimming beaches, boat launches, and athletic fields. Community parks serve local neighborhood needs for outdoor play and activity space.

## Costs and Revenues:

- Taxation amount will be \$5.00 per \$100,000 assessed residential property value.
- Will raise about \$715,000 per year (2009).
- Dollars collected are put in to a separate fund to be used ONLY for the acquisition of Regional Parkland sites in the Cowichan Region identified through the Regional Parks program.
- Fund to be created in the 2009 budget year.
- When the acquisition objectives are met over time, it is expected this special parkland acquisition tax will no longer be required.
- ALL of the Cowichan Valley Regional District will contribute to this initiative, as follows:
 

- City of Duncan	- District of North Cowichan	- Town of Lake Cowichan	- Town of Ladysmith	- Electoral Areas (all nine)
------------------	------------------------------	-------------------------	---------------------	------------------------------

### Electoral Areas

A	Mill Bay/Malahat
B	Shawnigan Lake
C	Cobble Hill
D	Cowichan Bay
E	Sahtlam/Glenora/Cowichan Station
F	Cowichan Lake
G	South/Skutz Falls
H	Saltair/Gulf Islands
I	North Oyster/Diamond
	Youbou/ Meade Creek

## Key Benefits:

Creation of the Regional Parkland Acquisition Fund provides the Regional Community with the opportunity to:

- Acquire large private landscapes within the Cowichan region to permit continued public use.
- Secure sites as a lasting legacy of special outdoor places in the public trust.
- Protect ecological integrity and provide natural protected areas for our wildlife.
- Build a network of regional park sites accessible for use and enjoyment by residents and visitors of the region.
- Enhance our quality of life, our recreational opportunities, as well as our understanding of the natural environment.
- Partner with other land stewardship organizations to pool financial resources towards securing sites for outdoor recreation and environmental conservation.
- Work with other organizations and levels of government to leverage funds and other resources to meet the objectives of the Master Plan.

## Open House Schedule:

Please join us to find out more.

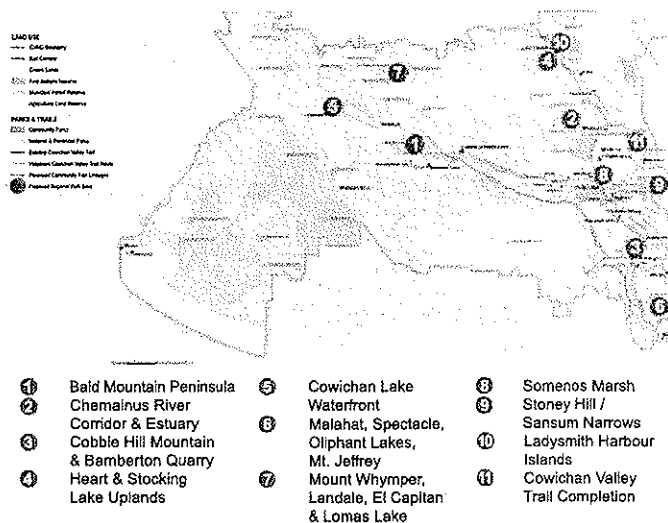
**Island Savings Centre**  
(Cowichan Community Centre)  
Thursday, October 16th  
7-9 pm  
Main Lobby

**Kerry Park Recreation Centre**  
Monday, October 20th  
7-9 pm  
Mill Bay

**Ladysmith Secondary School**  
Tuesday, October 21st  
7-9 pm  
Multi-purpose Room

**Lake Cowichan Recreation Centre**  
Thursday, October 23rd  
7-9 pm  
Curling Lounge

## Proposed Regional Park Sites:



## The Referendum Question:

"Are you in favour of the Board of the Cowichan Valley Regional District adopting CVRD Bylaw No. 3163 – Regional Parkland Acquisition Fund Service Establishment Bylaw, 2008" to establish an acquisition fund to provide for expenditures in respect to acquiring regional parkland within the Cowichan Valley Regional District?"

YES or NO

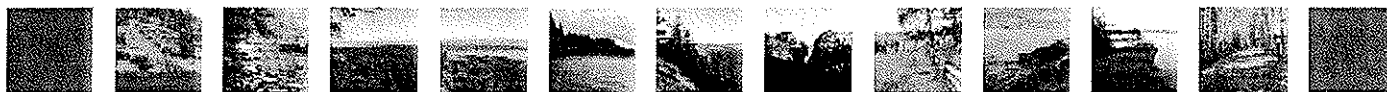
- Taxation amount will be \$5.00 per \$100,000 assessed residential property value.
- Funds raised through this taxation can be used ONLY for the acquisition of regional park sites in the Cowichan Region, not for any other purposes.

Referendum Date:

**November 15, 2008**

(with Municipal and School District Elections)

MAKE YOUR VOTE COUNT IN DETERMINING  
WHETHER WE LEAVE A LEGACY OF PROTECTED  
OUTDOOR PLACES FOR GENERATIONS TO COME.



# Public Awareness Information Panels from Fall Open Houses



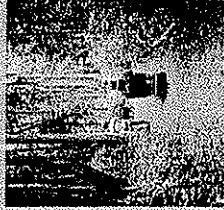
# WHAT ARE REGIONAL PARKS?

## Regional Parks Are:

- Parks and trails acquired for the benefit of the entire Cowichan Region and are managed by the Cowichan Valley Regional District.
- Funded through the taxation of all nine electoral areas and four municipalities.
- Typically larger, natural landscape areas of value to communities for outdoor recreation and environmental protection.

## Regional Park sites currently managed by CVRD:

- Sandy Pool Regional Park
- Osborne Bay Regional Park
- The Cowichan Valley Trail
- Spectacle Lake Park
- Chemainus River Park
- Cobble Hill Mountain Recreation Area



## How are Community Parks Different?

- Community Parks are typically smaller parks located in close proximity to existing residential neighborhoods.
- Community Parks provide a range of local outdoor recreation amenities including children's playgrounds, sports fields, grassy picnic areas, tennis courts, walking pathways, swimming beaches and neighborhood greenbelts.
- Each of the nine electoral areas and the four municipalities have their own system of community parks available for use and enjoyment by local residents.
- Funds to acquire and develop Community Parks are taxed for separately by each of the nine electoral areas and four municipalities.



# RISKS AND CHALLENGES

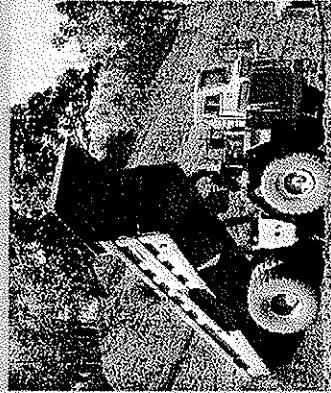


Over 60% of land in the Cowichan Valley Regional District is privately owned.

Less than 40% of land in the CVRD is publicly owned. The majority of these public lands are west of Lake Cowichan. This is a significant contrast to the over 90% public landbase Province wide.

Many significant and favoured informal sites valued by the public for outdoor recreation are located on privately owned land.

We are facing uncertainty over continued public access to many of these special spaces due to:



- Population growth
- Development pressures
- Land use changes
- Access limitations or restrictions
- Liability concerns
- Resource asset protection issues (i.e. private forestry lands)

Less than

**40%**

Of Cowichan Region  
land is publicly owned.

*vs.*

**90%**

In other parts of the  
Province, land accessible to  
the public accounts for over

Recognizing the need to secure significant spaces in the public interest, the CVRD Board adopted the Regional Parks and Trails Master Plan in 2007 to guide acquisition and management of regionally significant land of high outdoor recreational and environmental value to the Regional community.

**cowichan**

**Regional Parkland Acquisition Fund**  
*A Lasting Legacy...*



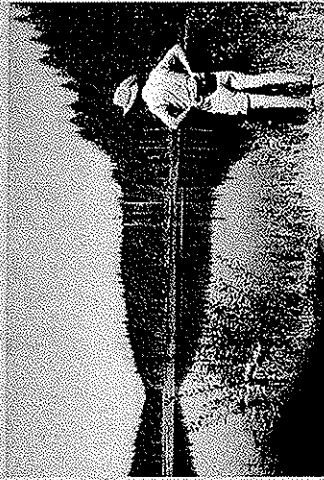


# CREATING THE MASTER PLAN



The Regional Parks and Trails Master Plan is a significant and detailed document, encompassing 90 pages plus 9 appendices.

It sets out strategic plans to guide a Regional Parks and Trails program for the Cowichan Region over the next 10 to 15 years.



The Regional Parks and Trails Master Plan was formally adopted by the Regional Board by Bylaw in March 2007.

The CVRD Board hired Lanarc Consultants Ltd. to work with the Regional Parks and Trails Advisory Group to create the Regional Parks and Trails Master Plan.

Throughout 2006, the following research and public consultation process was undertaken across the region:

- Analysis of the Current System
- Public Open Houses
- Region-Wide CVRD Residential Household Survey
- Regional/Community Stakeholder Consultation
- Public Information Meetings
- CVRD Website allowed for public input with an on-line feedback form

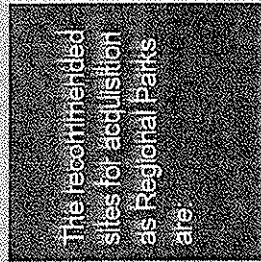
# PRIORITY REGIONAL PARK SITES

Based on the adopted vision, community consultation and stakeholder input, the Master Plan outlines a Regional Parks and Trails strategy, which proposes ten (10) new Regional Parks, and extensions to the existing Cowichan Valley Trail initiative.

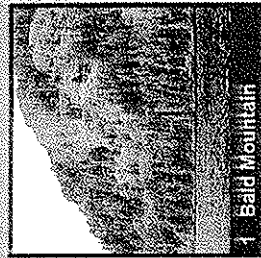
## Priority Regional Park Sites

- |   |   |    |   |
|---|---|----|---|
| 1 | Bald Mountain Peninsula                         | 7  | Mount Whymper, Landale, El Capitan & Lomas Lake |
| 2 | Chemainus River                                 | 8  | Somenos Marsh                                   |
| 3 | Comdor & Estuary                                | 9  | Stoney Hill / Sansum Narrows                    |
| 4 | Cobble Hill Mountain & Bamberton Quarry         | 10 | Ladysmith Harbour Islands                       |
| 5 | Heart & Stocking Lake Uplands                   | 11 | Cowichan Valley Trail Completion                |
| 6 | Cowichan Lake Waterfront                        |    |   |
|   | Malahat, Spectacle, Oliphant Lakes, Mt. Jeffrey |    |   |

The recommended sites for acquisition as Regional Parks are:



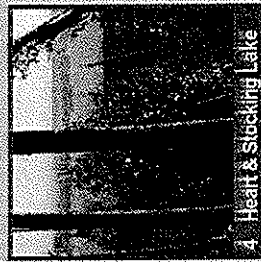
1 Bald Mountain



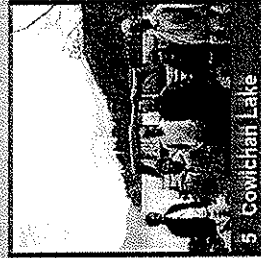
2 Chemainus Estuary



3 Cobble Hill Mountain



4 Heart & Stocking Lake



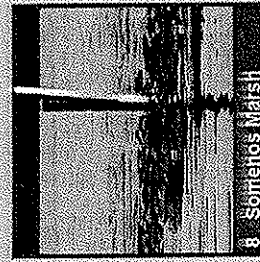
5 Cowichan Lake



6 Malahat



7 Mt. Whymper



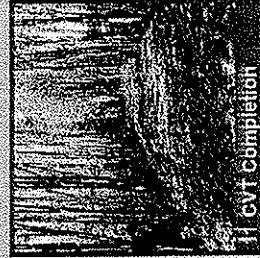
8 Somenos Marsh



9 Stoney Hill



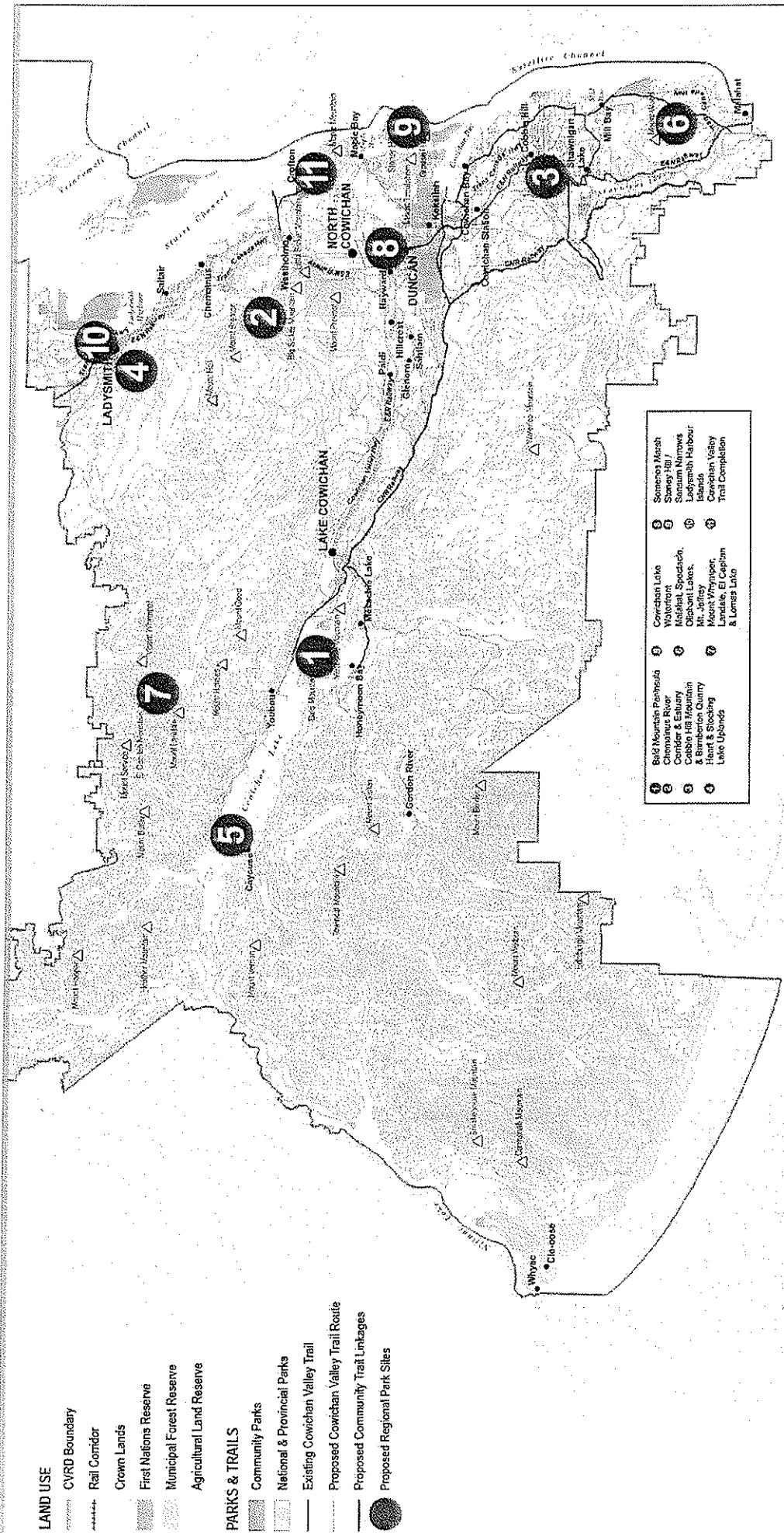
10 Ladysmith Harbour Islands



11 CVT Completion



# PROPOSED REGIONAL PARK SITES



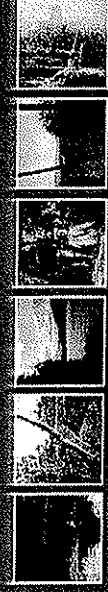
**cowichan**

**Regional Parkland Acquisition Fund**  
*A Lasting Legacy...*

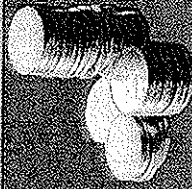


000053

# COSTS AND REVENUES



**Taxation amount will be  
\$5.00 per \$100,000  
assessed residential property value.**



**Will raise about \$715,000 per year.**

**Dollars collected are put in a separate fund to be used ONLY for the acquisition of Regional Parkland sites in the Cowichan Region identified through Regional Parks program.**

**Fund to be created in the 2009 budget year.**

**When the acquisition objectives are met over time, it is expected this special parkland acquisition tax will no longer be required.**

**ALL of the Cowichan Valley Regional District will contribute to this initiative, as follows:**

- City of Duncan
- District of North Cowichan
- Town of Lake Cowichan
- Town of Ladysmith
- Electoral Areas (all nine)

## Electoral Areas

A	Mill Bay/Malahat
B	Shawnigan Lake
C	Cobble Hill
D	Cowichan Bay
E	Sahlam/Glenora/Cowichan Station
F	Cowichan Lake South/Skutz Falls
G	Saltair/Gulf Islands
H	North Oyster/Diamond
I	Yolbou/ Meade Creek



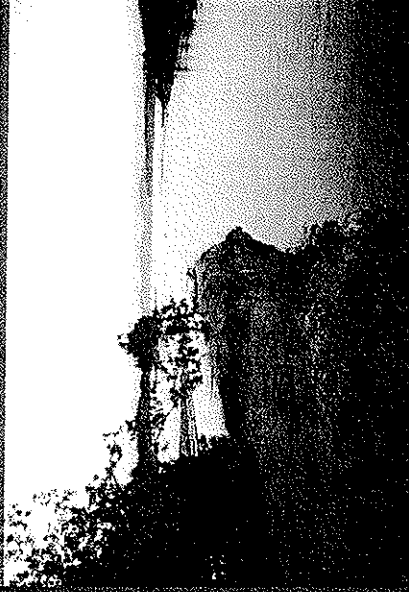
[illegible]

- **Provide a variety of outdoor recreational opportunities**
- **Protect natural ecosystems**
- **Feature representative landscapes**
- **Link our communities, and**
- **Enhance livability within the Region**

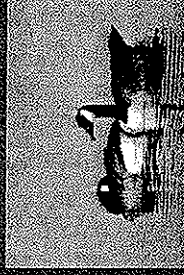
# THE BENEFITS

Creation of the Regional Parkland Acquisition Fund provides residents across the Region with the opportunity to:

- **ACQUIRE** large private landscapes of community value within the region.
- Secure the sites as a **LASTING LEGACY** of special outdoor places in the public trust.
- Protect **ECOLOGICAL INTEGRITY** and provide natural protected areas for our wildlife.
- Build a network of regional park sites accessible for **USE AND ENJOYMENT** by residents and visitors of the region.
- **ENHANCE** our quality of life, recreation options and understanding of the natural environment.
- Partner with other land stewardship organizations to **POOL FINANCIAL RESOURCES** towards securing sites of common value for outdoor recreation and environmental conservation.
- Work with other organizations and levels of government to **LEVERAGE FUNDS** and other resources to meet the objectives of the Master Plan.



Land with high outdoor recreational value is also frequently important for its environmental attributes (i.e. lake shores, riparian corridors and coastal waterfront).



Careful design of public access for recreation in these areas can have a significant benefit in reducing impacts on sensitive ecosystems.



# THE REFERENDUM QUESTION



"Are you in favour of the Board of the Cowichan Valley Regional District adopting CVRD Bylaw No. 3163 – Regional Parkland Acquisition Fund Service Establishment Bylaw, 2008 to establish an acquisition fund to provide for expenditures in respect to acquiring regional parkland within the Cowichan Valley Regional District?"

YES or NO

- Taxation amount will be \$5.00 per \$100,000 assessed residential property value.
- Funds raised through this taxation can be used ONLY for the acquisition of regional park sites within the Cowichan Region, not for any other purposes.

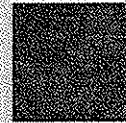
**Referendum Date:**

**November 15, 2008**

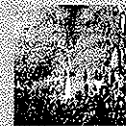
(With Municipal and School District Elections)

**Make your vote count in determining whether we leave a legacy of protected outdoor places for generations to come.**

**More Information:**  
250-748-2620  
[www.cvrdd.bc.ca](http://www.cvrdd.bc.ca)



Bald Mountain Peninsula



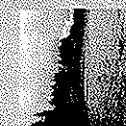
Chemainus River Corridor & Estuary



Cobble Hill Mt & Bamerton Quarry



Heart & Stocking Lake Uplands



Cowden Lake Waterfront



Malahat Spreads, Oliphant Lakes, Mt. Jeffrey



Mt. Wynn timer, Lardale, El Capitan & Lomas Lake



Somenos Marsh



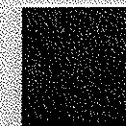
Stoney Hill, Sansum Narrows



Ladysmith Harbour Islands



Cowichan Valley Trail (TOT)



**cowichan**

**Regional Parkland Acquisition Fund**

*A Lasting Legacy...*



000057

# Newspaper Media Ad



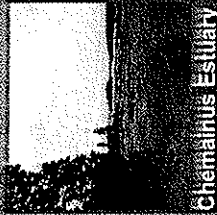
# Referendum:

# Make Your Vote Count!

Recommended  
sites for  
Regional Park  
Acquisition



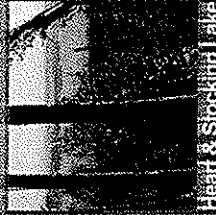
Bald Mountain



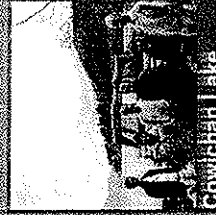
Chemainus Estuary



Bubble Hill Mountain



Heart & Stocking Lake



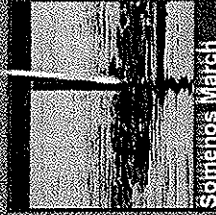
Cowichan Lake



Malahat



Mt. Whymper



Soanenos March



Storey Hill



Ladysmith Harbour Is.



Cowichan Valley Trail

**Referendum Date:**

**November 15, 2008**

(With Municipal and School District Elections)

**Referendum Question:**

"Are you in favour of the Board of the Cowichan Valley Regional District adopting CVRD Bylaw No. 3163 – Regional Parkland Acquisition Fund Service Establishment Bylaw, 2008 to establish an acquisition fund to provide for expenditures in respect to acquiring regional parkland within the Cowichan Valley Regional District?"

# YES or NO

More Information: 250-746-2620 [www.cvrld.bc.ca](http://www.cvrld.bc.ca)

**MAKE YOUR VOTE COUNT IN DETERMINING WHETHER WE LEAVE A LEGACY OF PROTECTED OUTDOOR PLACES FOR GENERATIONS TO COME.**

Taxation amount will be \$5.00 per \$100,000 assessed residential property value. So, for a \$350,000 home, annual cost is \$17.50.

All taxpayers throughout the Cowichan Valley Regional District would contribute to the fund.

Provincial legislation guarantees that money collected can **ONLY** be used to acquire Regional Parkland sites within the Cowichan Region.



**CVRD**

COWICHAN VALLEY  
REGIONAL DISTRICT

175 Ingram Street,  
Duncan, B.C. V9L 1N8

**Regional Parkland  
Acquisition Fund**  
*A Lasting Legacy...*

Phone: (250) 746-2500

Fax: (250) 746-2513

Email: [cvrd@cvrd.bc.ca](mailto:cvrd@cvrd.bc.ca)

Website: <http://www.cvrld.bc.ca>



SPECIAL PARK DISTRICTS FORUM  
**LEADING THE GREENWAY**

[Home](#)

[Program](#)

[Hotel](#)

[Contact Us](#)

[Fun Stuff](#)

[Register](#)

**Conference Agenda at a glance:**

**Monday, June 8**

- Registration from 5 - 8 pm
- Conference Hotel and Hospitality  
[Lincolnshire Marriott Resort](#)

**Tuesday, June 9**

- Registration from 8 am - 7 pm  
Breakfast not included
- 8 am - 4 pm [Optional Pre-Forum Activities](#) (Additional fee required)
  - Choose one from below when registering.
  - Meet in the hotel lobby for these activities.

Get more information by clicking on the links below:

1. [Golf at ThunderHawk](#) - 8 am - 3 pm
  2. [Biking along Des Plaines River Trail](#) - 10 am - 3 pm
  3. [Chicago Architecture Tour](#) - 8 am - 4 pm
  4. [Bird watching at Middlefork Savanna](#) - 7 - 11 am
- 5:30 pm Forum officially begins with **Welcome Dinner** at Marriott

**Wednesday, June 10**

- 6 - 8 am Breakfast at Marriott's King's Wharf Restaurant
- 6:30 - 8 am Early morning bird walk (optional)
- 7 - 9 am Registration
- 9 - 10:30 am Tour of [Ryerson Woods & Welcome Center](#)
- 11 am - 2 pm Tours of [Fort Sheridan](#) and lunch

You'll be able to choose two of the three tours offered:

- Session 1: [Hawk's Nest](#): A half-mile of easy walking tour of the hawk's nest. Step into an oversized red-tailed hawk's nest, learn about this unique exhibit, chat with the designer, discuss the program and enjoy a visit from

- our resident red-tailed hawk.
- Session 2: **History:** A mile of easy walking tour of Parade Grounds, covers establishment of the Fort, cavalry, artillery, a World War II prisoner of war camp, and stops at General George Patton's residence.
- Session 3: **Ravine/Beach:** A mile walk with a steep portion on a paved trail. This tour includes ravine restoration, storm water mitigation, erosion control as seen from the trail, and beach restoration. Learn about our plan to stabilize beach and bluff erosion and about other management tools we use.
- 2:30 - 5:30 pm site tour of Independence Grove
  - **Break-out Sessions:**  
Native garden tour, administrative services, enterprise operations, planning and development, outreach and stewardship, natural resource management and educational programming
  - **Self-guided Activities:**  
Complimentary boat rentals, pontoon boat tours, swimming and beach use, bike rides, adaptive use playground tour, voyageur canoe rides, trolley site tours, fishing, and lake ecology
- 5:30 - 7:30 pm Reception and dinner
- 7:30 - 9 pm Evening concert by the United States Navy Band

## Thursday, June 11

- 6 - 8 am Breakfast at Marriott's King's Wharf Restaurant
- 8:45 - 9:45 am
  - Heron Creek: Start your day at one of our newest preserves to take a guided nature walk, or hear about the master planning process from our landscape architects.
- 9:45 am - 12:15 pm Lakewood Forest Preserve and Lake County Discovery Museum  
You'll be able to choose any three of six presentations offered:
  - **Collections/Archives** – Learn about the Museum's archival collections, how they are used for research, and how technology has improved public access to them.
  - **Development** – Hear how our Development Office partners with corporations for success.
  - **Exhibitions** – Learn about our exhibition program at the Museum and in preserves throughout the County, and about efforts being taken to make our public exhibitions "green."
  - **Museum Education** – Field trip to popular destination - Lake County Discovery Museum.
  - **Master Planning** – Learn about some of the pitfalls of the public planning process and how to avoid them, as Forest Preserve landscape architects discuss some of the challenges that have been faced with the Lakewood Master Plan.
  - **Operations & Public Safety** – Learn about the existing Operations &

000061

Public Safety center at Lakewood and the opportunities and challenges that it has presented.

- 12:30 - 2 pm Fox River Preserve and Marina
  - After a busy morning, relax and enjoy lunch and boat tours at the Fox River Preserve and Marina. Learn about the transformation of the site from a campground to a marina, take a tour of the marina operations, enjoy a boat ride on the Fox River, or just do a little fishing.
- 2:45 - 4:30 pm Rollins Savanna

You'll be able to choose one of eight options offered:

- **Restore Galore** – Take a wagon ride to see stages of restoration practices, learn about restoration equipment and partner agencies. Also stop at our new bird viewing area.
- **If you build it they will come** – Take a wagon ride to experience the rewards of restoration, learn about restoration equipment and partner agencies. Also stop at our new bird viewing area.
- **On your own (Hike)** – Take a self-guided 1.5-mile hike along the trails. You can also stop at our new bird viewing area, and learn about restoration equipment and partner agencies.
- **Tour de Rollins (Bike ride)** – Enjoy a 3-mile bike ride with a naturalist and stop at our new bird viewing area, and learn about restoration equipment and partner agencies.
- **Prairie Promenade (Bird walk)** - Take a 1.5-mile bird walk with a naturalist. Stop at new bird viewing area and learn about restoration equipment and partner agencies.
- **Wetland Wander** – Walk a half-mile on the boardwalk to explore the wetter side of the site. Take a closer look at what's below the water level. Learn about restoration equipment and partner agencies.
- **Seeds for the Future** – Tour the greenhouse and seed production nursery to learn about native seed production for ecological restoration projects. Learn about restoration equipment and partner agencies.
- **Monitor Programs** – Visit partner agencies and our own natural resource staff to learn about the various monitoring programs we support. Also learn about restoration equipment and partner agencies.
- 5:15 - 8:30 pm ThunderHawk Golf Club
  - Golf Club tour
  - Dinner


## Friday, June 12

- 6 - 8 am Breakfast at Marriott's King's Wharf Restaurant
- 6:30 - 8 am Early morning fun run along Des Plaines River (optional)
- 8 am - 12:30 pm Tours and Activities - You'll be able to choose one of the three tracks offered:
  - Track 1- Cultural Resources
    - Adlai E. Stevenson Historic Home tour
    - Bonner Heritage Farm -

000062

2/5/2009

- Exhibitions and planning
- Land Acquisition
- Track 2- Operations & Public Safety
  - New Operations & Public Safety Facility " under construction" tour
  - Duck Farm – Dog exercise area tour
  - Greenbelt – Ranger Station & Maintenance shop tour
- Track 3 - Planning & Environmental Education tour
  - Nippersink: Guided walking tour and hands-on activities that highlight the preserve's site design, integration of facilities for educational camp programs, shoreline stabilization and restoration and aquatic habitat management.
  - Site Tour of Greenbelt Forest Preserve
- Conference concludes for all groups with lunch and entertainment at the Greenbelt Cultural Center.



Copyright © 2008 | Lake County Forest Preserves | 2000 North Milwaukee Ave, Libertyville IL 60048  
Questions or Comments? Call us at (847) 367-6640



Lake County Forest Preserves  
www.LCFPD.org

#### Information

[Register](#)

[Summary](#) [Fees](#) [Agenda](#) [Attendees](#) [Contact Us](#)

An international conference of park, recreation and conservation professionals unlike any other conference you've attended.

There are no lectures, no confinement to conference rooms - just four days of time outdoors, exploring preserves and facilities, and exchanging ideas with others in the field.

- Transportation will be provided for all Forum activities from the Marriott hotel.
- For June 10-12, breakfast is included in the hotel registration, and lunch and dinners are included in the Forum registration fee.
- Be prepared for hiking, biking and other outdoor activities.
- Water bottle will be provided, but please bring your own bag or backpack.

[To get special rates at hotel](#)

**Special Needs:** If you have special needs that may affect your participation in the Special Park Districts Forum, please e-mail us at [Forum2009@LCFPD.org](mailto:Forum2009@LCFPD.org)

#### Details

**When** Tuesday, June 9, 2009 9:00 AM - Friday, June 12, 2009 2:30 PM



**Where**

Lincolnshire Marriott Resort  
Ten Marriott Drive  
Lincolnshire, Illinois 60069  
847-634-0100



**Planner** [Lake County Forest Preserves](#)

**Websites** [www.LCFPD.org](http://www.LCFPD.org), [Forum2009](#)

[Register](#)[Privacy Policy](#)[Customer Care](#)[www.cvent.com](http://www.cvent.com)

Copyright © 2008 Cvent. All rights reserved.

000064