

Minutes of the Cobble Hill Parks and Recreation Commission meeting held in the Dining Room of the Cobble Hill Hall on Watson Avenue at 7 pm on Monday, October 6th 2014.

Those present: Chair John Krug, Alan Seal, Gord Dickenson, Al Garside, Shelley Balme, Ansel Koehn, Annie Ingraham, Jennifer Symons, Lynn Wilson, Ruth Koehn, Dennis Cage and Director Gerry Giles.

Also present: Ryan Dias, Dan Brown and guest Matteus Clement.

The meeting was called to order at 7 pm by Chair John Krug.

Moved/second
that the agenda as amended be approved. MOTION CARRIED

Moved/second
that the minutes of the September 15, 2014 Cobble Hill Parks Commission meeting be adopted as circulated. MOTION CARRIED

New Business:

1) All items in the draft 2015 Parks budget were reviewed in detail after which it was,

Moved/second
that the Summer Student Program be increased from 6 days to 8 days. MOTION CARRIED

It was agreed the Capital Replacement for the Hatch Point Trail would remain at \$30,000 and summer students would be utilized on this project as it involves mainly manual labour.

Moving the horse trailer parking lot at Quarry Nature Park was discussed at some length. After weighing the pros and cons it was,

Moved/second
that the plan to relocate the current horse trailer parking lot to alongside Cobble Hill Road not proceed due to safety concerns and concerns with access and egress. MOTION CARRIED

Moved/second
that the budget for the Summer Playground Program in Farnsworth Park be increased to \$8700.00. MOTION CARRIED

It was acknowledged the next parks on the list for improvements are William Shearing and Farnsworth Park. Also, that work undertaken in Boatswain Park would be done as quickly as possible and that short term borrowing would be utilized to accommodate the improvements scheduled for this park.

Moved/second
that the 2015 Draft Budget be accepted by the Commission. MOTION CARRIED

2) Discussion then turned to possible improvements to Cleasby Bike Park. The following report was provided by Dan Brown.

Schedule of works to date:

Spring 2009 – Park Constructed - ~\$35,000 + in kind donations

Spring 2010 – Modifications made to existing park features to reduce risk - ~\$5000 + in kind donations

Spring 2011 – Removal of larger park jumps. Installation of wood features - ~\$3000

Summer 2013 – General maintenance and modifications utilizing student labour - ~\$5000

Spring 2014 – Pump track construction, jump modifications, tree removal - \$8000 to date

Total expenditures to date: \$56,000 + in kind donations

Planning for the next 10 years

- Who is our target user group? ○ Beginner

○ Intermediate

○ Advanced

- What is the purpose of the park? ○ Entertainment

○ Skill building

- How many resources should we dedicate to the bike park? (capital, R&M, staff) ○ In relation to the rest of Quarry Nature Park

- How much risk is the organization willing to accept? ○ Low

○ Moderate

○ High

Option 1 – Design and installation of advanced park features

- Requires third party design/construction firm at a cost of ~\$100,000.

- Structure and feature modifications to take place every 2 – 4 years at additional costs of ~\$20,000 per modification.

- Increased maintenance requirements annually up to \$6000.

Option 2 – Skills park design and construction

- Able to design in-house and construct with local contractors within the \$24,000 allocated to the project plus additional funds for site furnishings and landscaping (up to \$10,000).

- Structure and feature modifications to take place every 4 - 6 years at additional costs of \$5000 per modification.

- Annual maintenance up to \$3000 including materials and labour.

Option 3 – Skills park with expansion area

- Option 2 + opportunity to expand the park and facilitate more advanced park construction under a stewardship agreement with a non-profit group.

- Non-profit group would carry liability, insurance, and be required to finance any and all construction and repairs to the park in accordance with standards put forth by the CVRD.

Considerable discussion ensued and the following two options were presented for the Commission's consideration:

Option 1

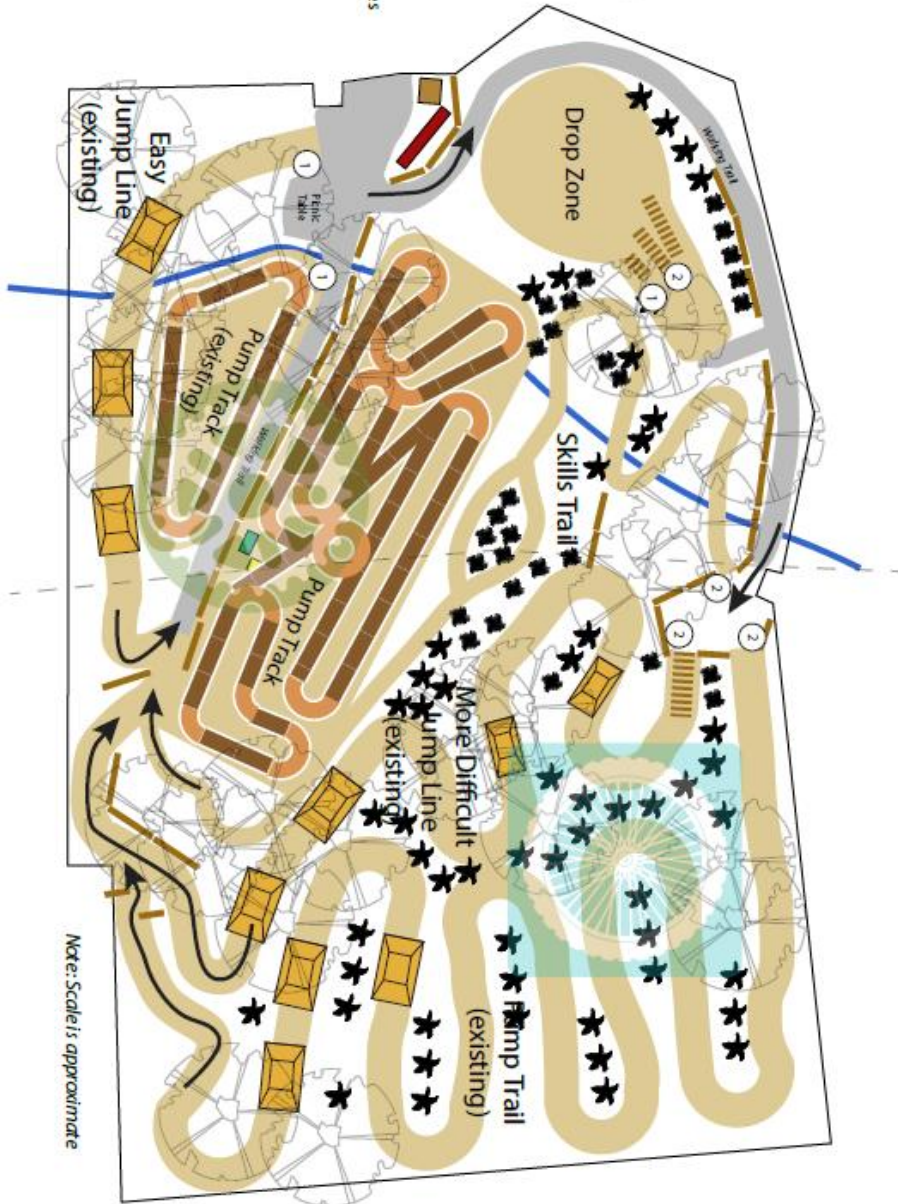
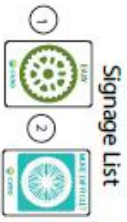
CVRD
Cleasby Bike Park
 Skills Park Concept

New Features:

Pump Track - Larger, more complex pump track than is currently offered featuring multiple line options and more advanced features. Separate from easy pump track to create opportunities for practice and skill development.

Drop Zone - Three drops ranging in size from 0.3m with roll down to 1.0m with no roll down option.

Skills Trail - Technical trail that includes features such as log bridges, rock gardens, tight corners, and other elements that may be found on the mountain trails. Easy out options available on all features.



Note: Scale is approximate

Option 2



CVRD
Cleasby Bike Park
 2014 Proposed Re-design

Drawn by: Dan Brown, CVRD Parks and Trails
 Draw Date: January 20, 2014

- Signage List**
- 1. NO ENTRY
 - 2. CAUTION
 - 3. CAUTION
You are entering a 15 MPH zone. Observe posted speed limits
 - 4. NO ENTRY
 - 5. CAUTION
You are entering a 15 MPH zone. Observe posted speed limits
 - 6. NO ENTRY

It was agreed it would be beneficial to meet at the Bike Park on Saturday to review these plans. Ryan and Dan were thanked for their attendance at the meeting, which adjourned at 8:50 pm.

John Krug
 Chair