

SCHEDULE T – TRANSPORTATION AND MAJOR ROADS MAPS
(excluding the Gulf Islands)

April 6, 2022

Table of Contents

Introduction..... 3

T1 Regional Overview 4

TA Electoral Area A..... 5

TB Electoral Area B..... 6

TC Electoral Area C..... 7

TD Electoral Area D..... 8

TE Electoral Area E..... 9

TF Electoral Area F 10

TG Electoral Area G 11

TH Electoral Area H..... 12

TI Electoral Area I..... 13

Introduction

Schedule T contains maps identifying Transportation and Major Roads in the Cowichan Valley Regional District. The map naming conventions indicate the Schedule letter, electoral area, and map number as follows.

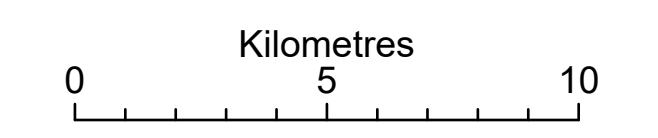
Map Identification Key			
Map Name	Schedule	Electoral Area (if applicable)	Map number (if applicable)
T1 Regional Overview	T		1
TA Electoral Area A	T	A	

CVRD Bylaw No. 4373
Cowichan Valley Regional District
Official Community Plan
for the Electoral Areas Bylaw, 2022

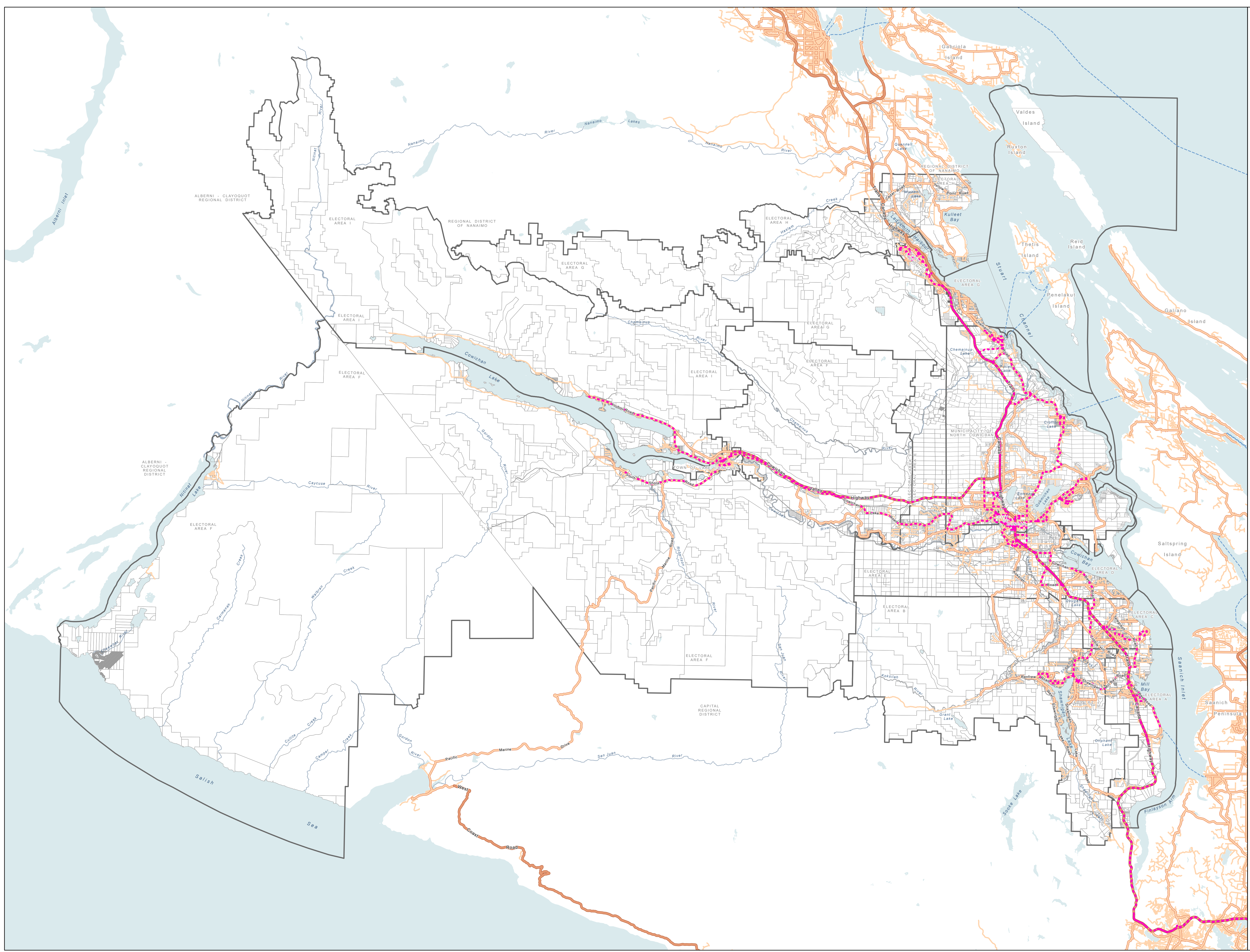
Schedule T
Transportation and Major Roads
(excluding the Gulf Islands)
Map T1 Regional Overview

- Transit Routes
- Primary Highway
- Collector Road
- Local Road
- - - Ferry
- Reference Features
 - Electoral Area Boundary
 - Parcel Boundary

DRAFT
April 6, 2022



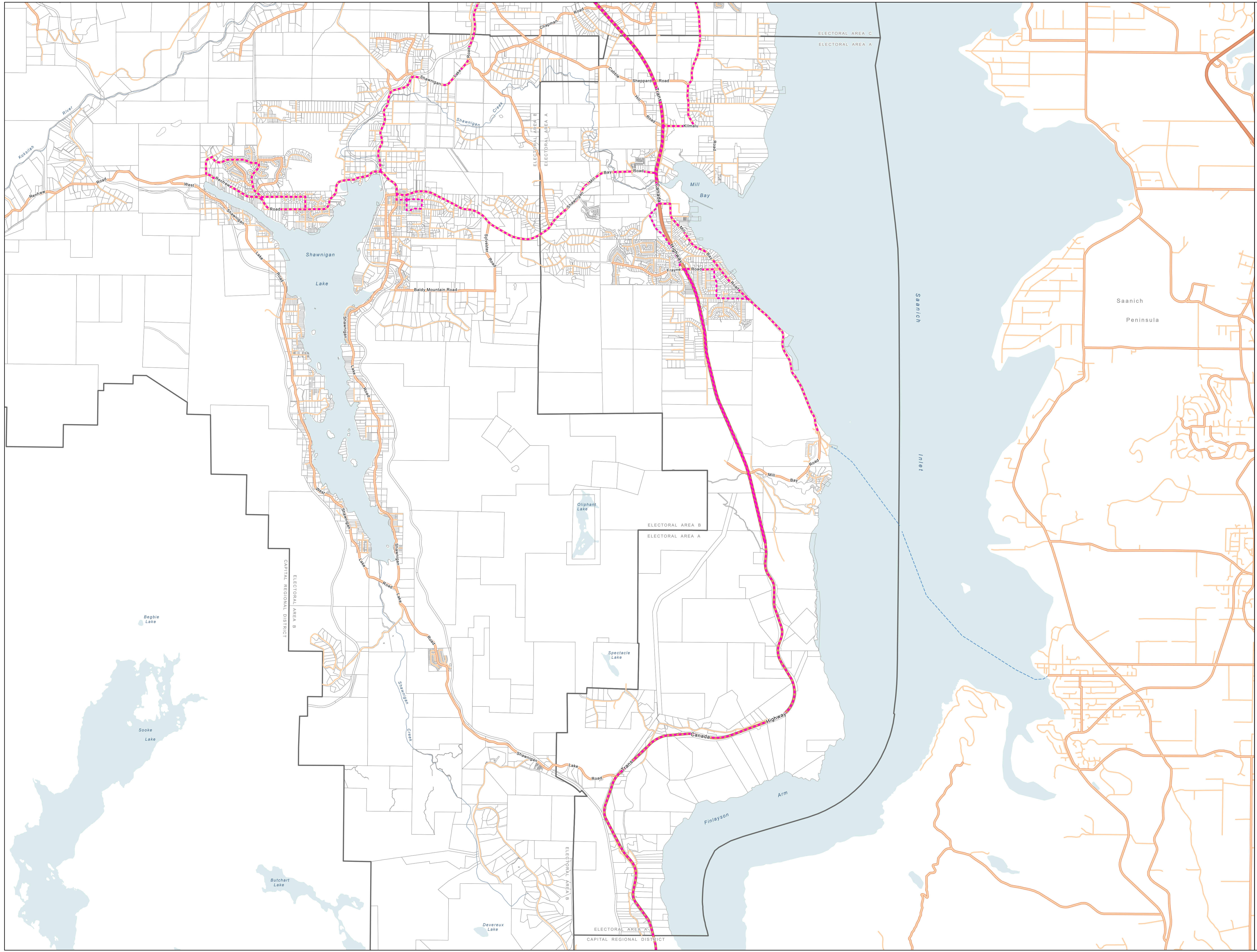
Coordinate system: NAD 1983 UTM Zone 10N



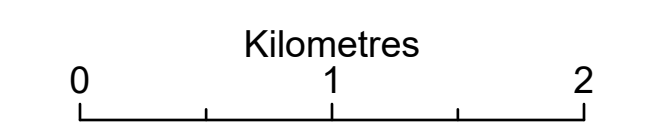
CVRD Bylaw No. 4373
 Cowichan Valley Regional District
 Official Community Plan
 for the Electoral Areas Bylaw, 2022

Schedule T
 Transportation and Major Roads
 (excluding the Gulf Islands)
 Map TA Electoral Area A

- - - Transit Routes
 - Primary Highway
 - Collector Road
 - Local Road
 - - - Ferry
- Reference Features
- Electoral Area Boundary
 - Parcel Boundary



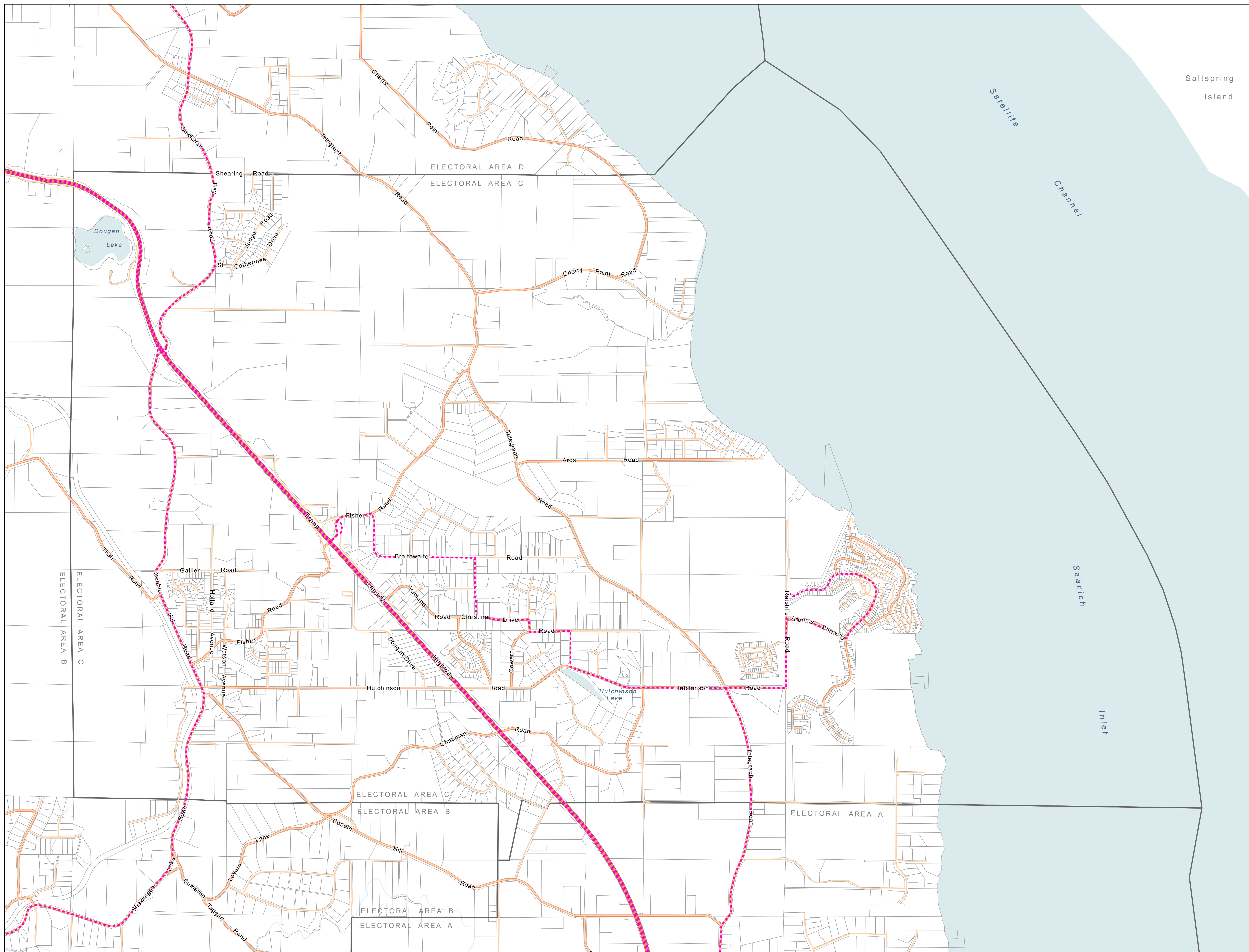
DRAFT
April 6, 2022



Coordinate system: NAD 1983 UTM Zone 10N

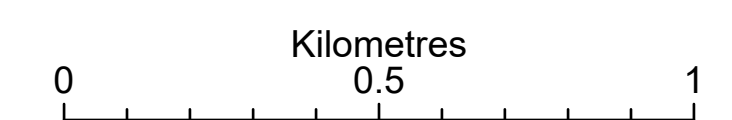
CVRD Bylaw No. 4373
 Cowichan Valley Regional District
 Official Community Plan
 for the Electoral Areas Bylaw, 2022

Schedule T
 Transportation and Major Roads
 (excluding the Gulf Islands)
 Map TC Electoral Area C



- - - Transit Routes
 - Primary Highway
 - Collector Road
 - Local Road
- Reference Features
- Electoral Area Boundary
 - Parcel Boundary

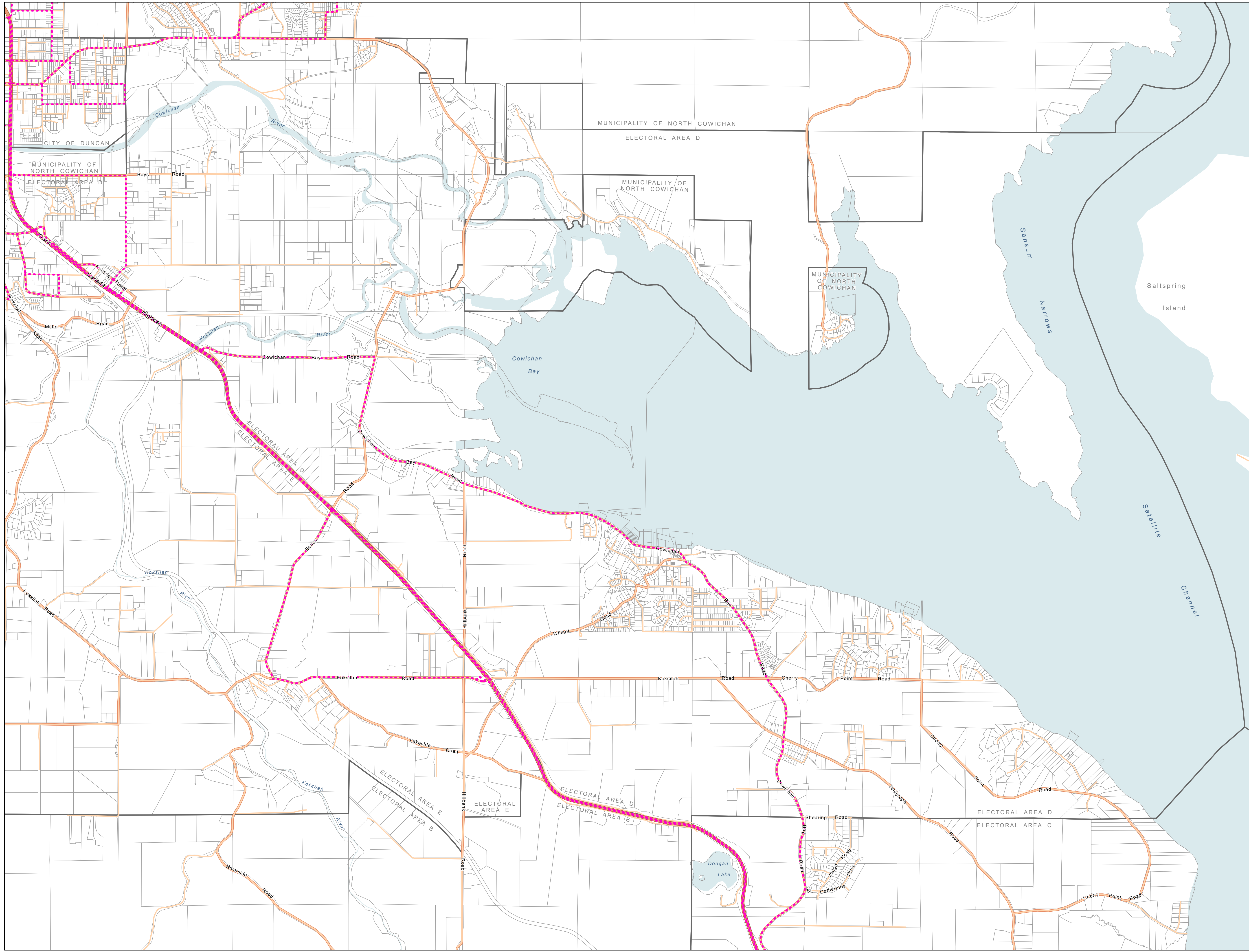
DRAFT
April 6, 2022



Coordinate system: NAD 1983 UTM Zone 10N

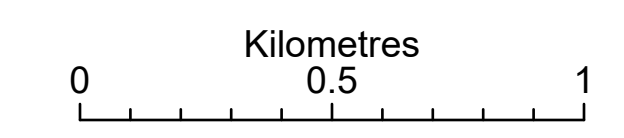
CVRD Bylaw No. 4373
 Cowichan Valley Regional District
 Official Community Plan
 for the Electoral Areas Bylaw, 2022

Schedule T
 Transportation and Major Roads
 (excluding the Gulf Islands)
 Map TD Electoral Area D



- - - Transit Routes
 - Primary Highway
 - Collector Road
 - Local Road
- Reference Features
- Electoral Area Boundary
 - Parcel Boundary

DRAFT
April 6, 2022



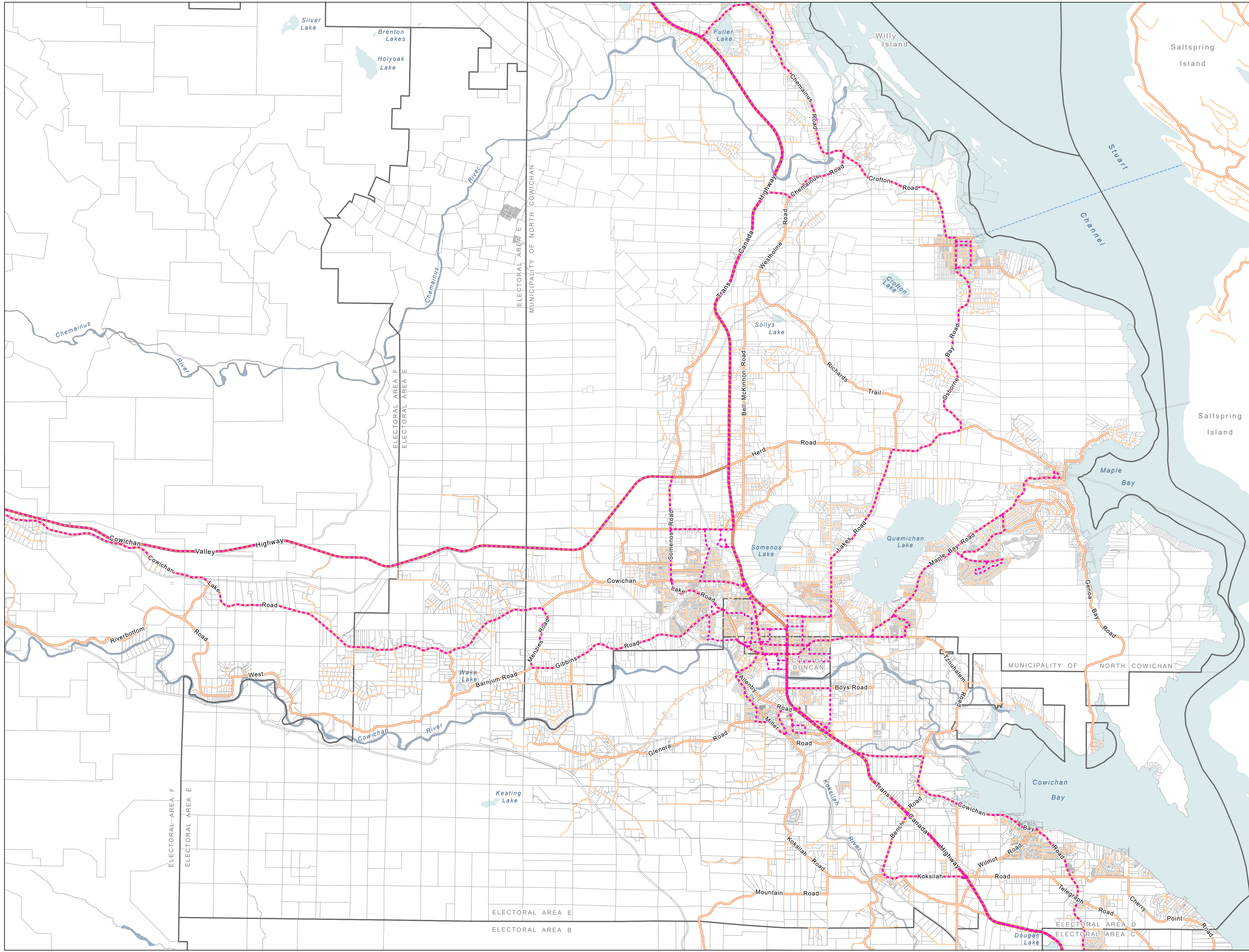
Coordinate system: NAD 1983 UTM Zone 10N



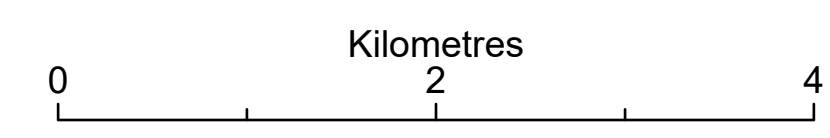
CVRD Bylaw No. 4373
 Cowichan Valley Regional District
 Official Community Plan
 for the Electoral Areas Bylaw, 2022

Schedule T
 Transportation and Major Roads
 (excluding the Gulf Islands)
 Map TE Electoral Area E

- - - Transit Routes
 - Primary Highway
 - Collector Road
 - Local Road
 - - - Ferry
- Reference Features
- Electoral Area Boundary
 - Parcel Boundary



DRAFT
 April 6, 2022



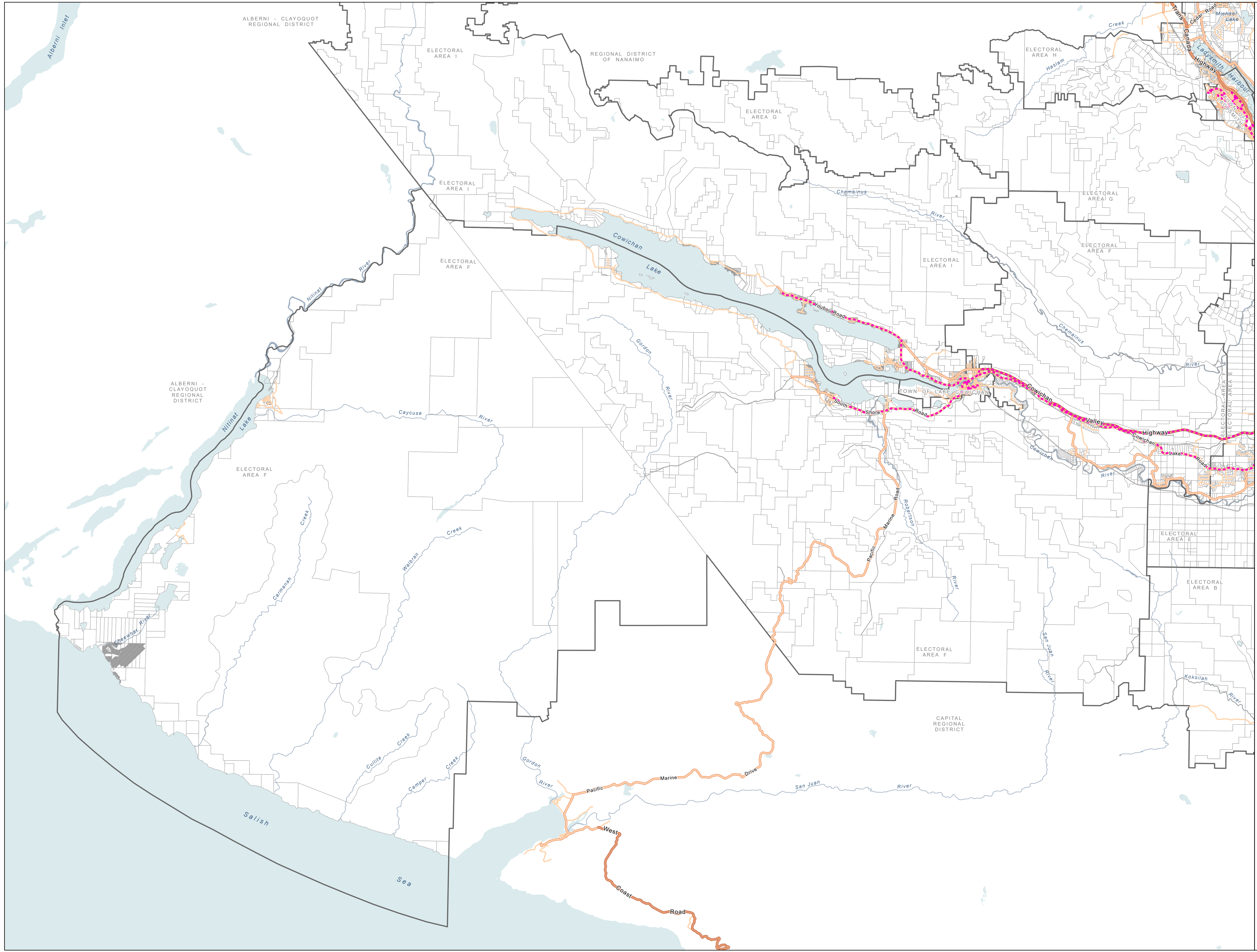
Coordinate system: NAD 1983 UTM Zone 10N

N

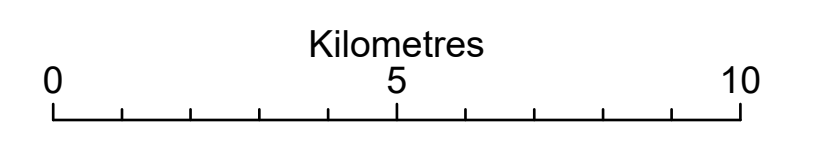
CVRD Bylaw No. 4373
 Cowichan Valley Regional District
 Official Community Plan
 for the Electoral Areas Bylaw, 2022

Schedule T
 Transportation and Major Roads
 (excluding the Gulf Islands)
 Map TF Electoral Area F

- - - Transit Routes
 - Primary Highway
 - Collector Road
 - Local Road
- Reference Features
- Electoral Area Boundary
 - Parcel Boundary



DRAFT
 April 6, 2022



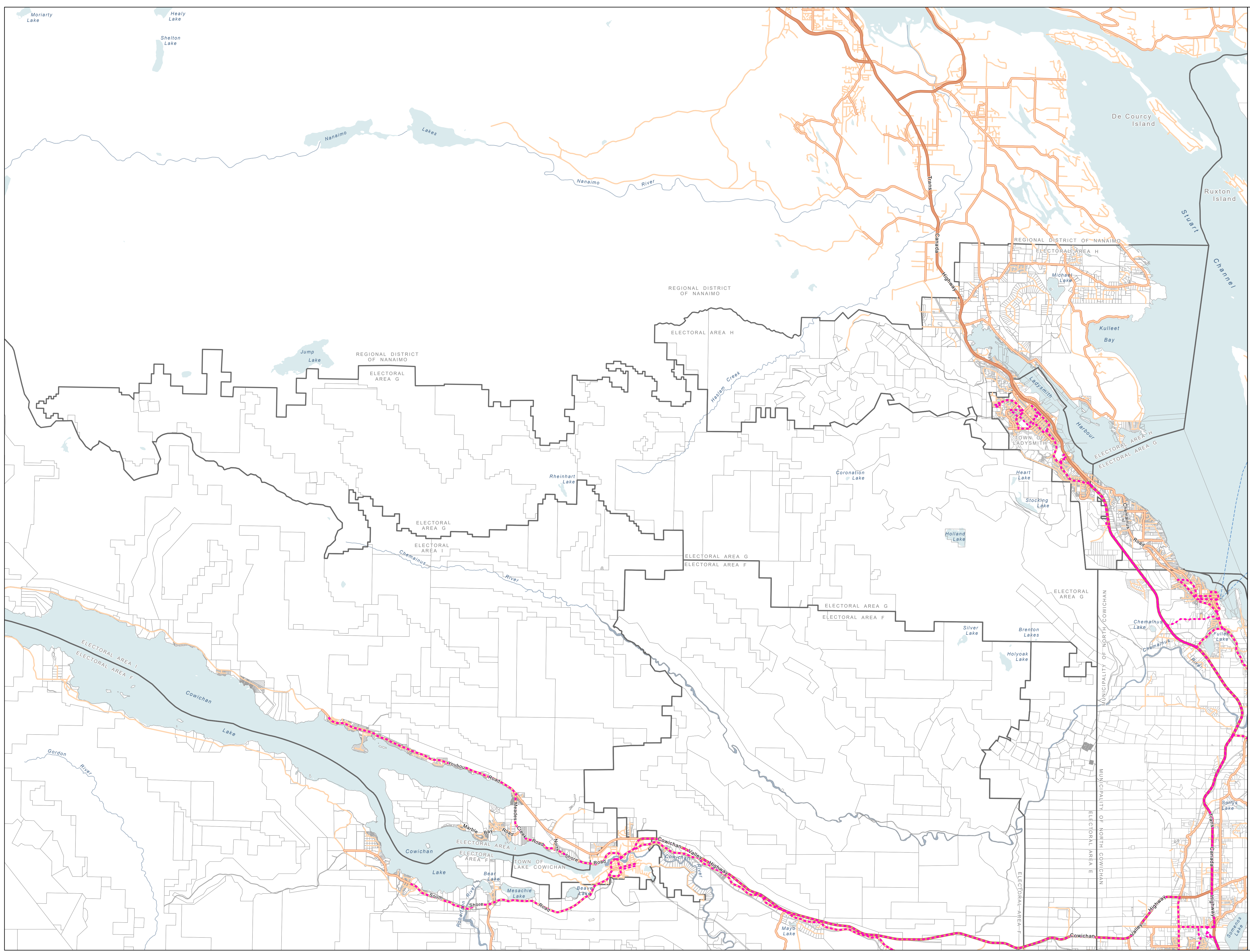
Coordinate system: NAD 1983 UTM Zone 10N

N

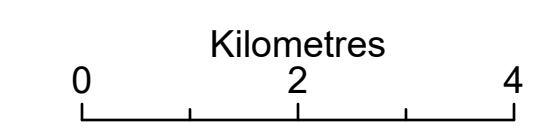
CVRD Bylaw No. 4373
 Cowichan Valley Regional District
 Official Community Plan
 for the Electoral Areas Bylaw, 2022

Schedule T
 Transportation and Major Roads
 (excluding the Gulf Islands)
 Map TG Electoral Area G

- - - Transit Routes
 - Primary Highway
 - Collector Road
 - Local Road
 - - - Ferry
- Reference Features
- Electoral Area Boundary
 - Parcel Boundary



DRAFT
 April 6, 2022



Coordinate system: NAD 1983 UTM Zone 10N

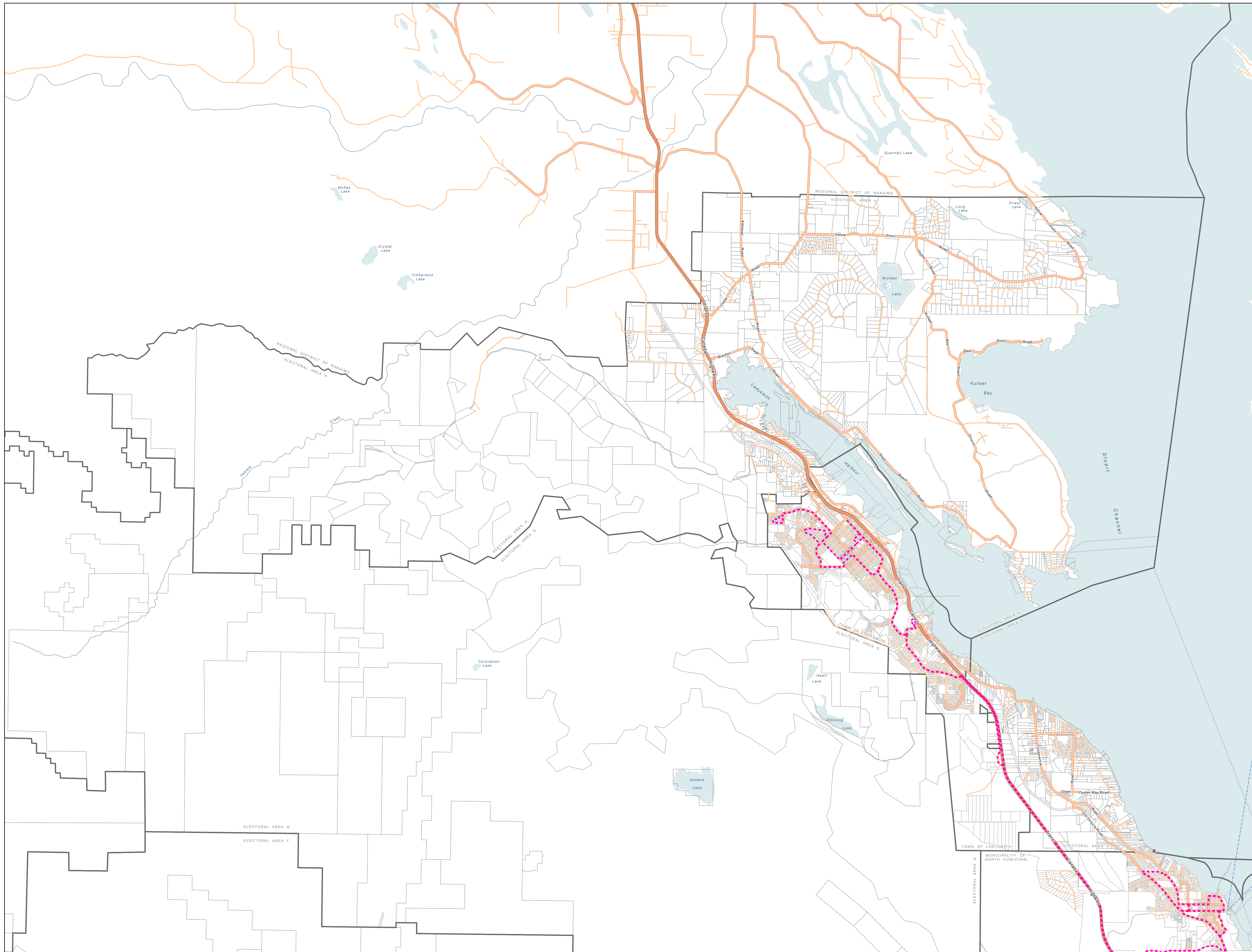


CVRD Bylaw No. 4373
 Cowichan Valley Regional District
 Official Community Plan
 for the Electoral Areas Bylaw, 2022

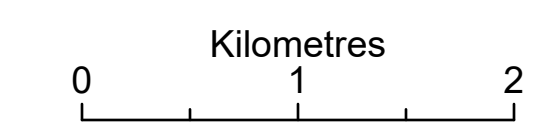
Schedule T
 Transportation and Major Roads
 (excluding the Gulf Islands)

Map TH Electoral Area H

- - - Transit Routes
 - Primary Highway
 - Collector Road
 - Local Road
 - - - Ferry
- Reference Features
- Electoral Area Boundary
 - Parcel Boundary



DRAFT
April 6, 2022

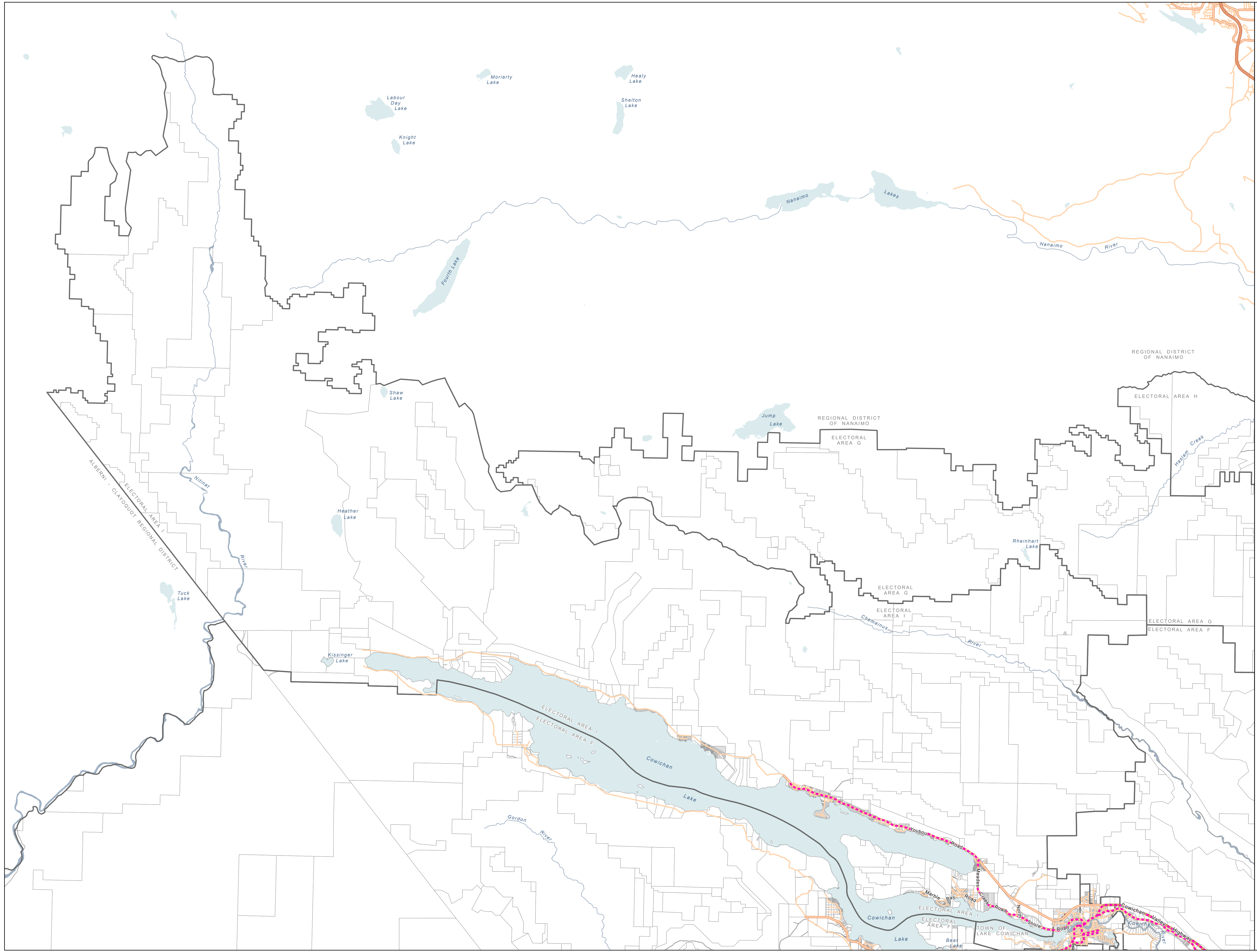


Coordinate system: NAD 1983 UTM Zone 10N

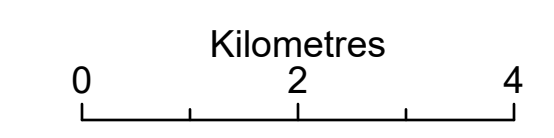
CVRD Bylaw No. 4373
 Cowichan Valley Regional District
 Official Community Plan
 for the Electoral Areas Bylaw, 2022

Schedule T
 Transportation and Major Roads
 (excluding the Gulf Islands)
 Map T1 Electoral Area I

- - - Transit Routes
- Primary Highway
- Collector Road
- Local Road
- Reference Features
- Electoral Area Boundary
- Parcel Boundary



DRAFT
 April 6, 2022



Coordinate system: NAD 1983 UTM Zone 10N