

OFFICIAL COMMUNITY PLAN FOR THE ELECTORAL AREAS

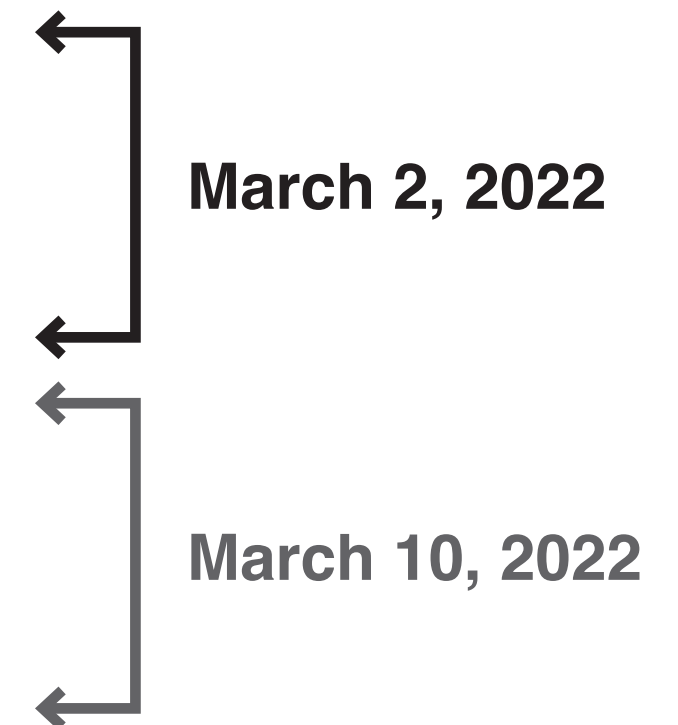
BYLAW 4373

March 2, 2021



1| Purpose

2| Policies & Metrics

- i. Mitigate & Adapt to the Climate Crisis**
- ii. Manage Infrastructure Responsibly**
- iii. Make Distinct, Complete Communities**
- iv. Expand Mobility Options**
- v. Protect & Restore Natural Assets**
- vi. Strengthen Local Food & Agricultural Systems**
- vii. Enhance Regional Prosperity**
- viii. Improve Governance & Implementation**



3| Next Steps

-  **Provide an overview to the Electoral Area Directors on the draft modernized Official Community Plan policies and metrics**
-  **Receive feedback on the draft policies and metrics in preparation for community circles**

POLICY & METRICS

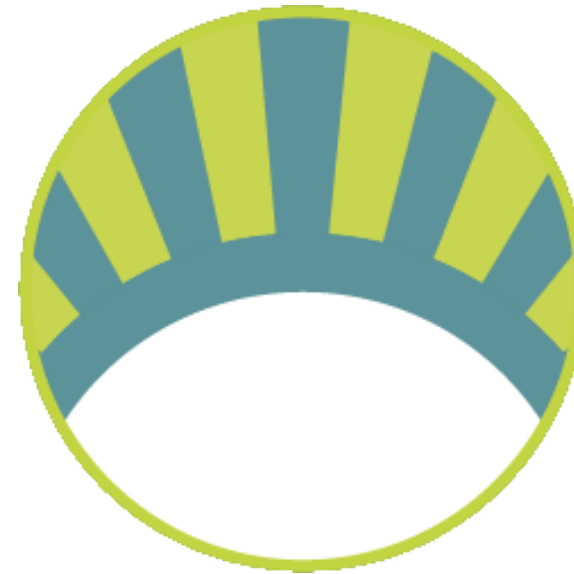
**MITIGATE & ADAPT TO
THE CLIMATE CRISIS**



**MANAGE
INFRASTRUCTURE
RESPONSIBLY**



**MAKE DISTINCT,
COMPLETE
COMMUNITIES**



**EXPAND MOBILITY
OPTIONS**



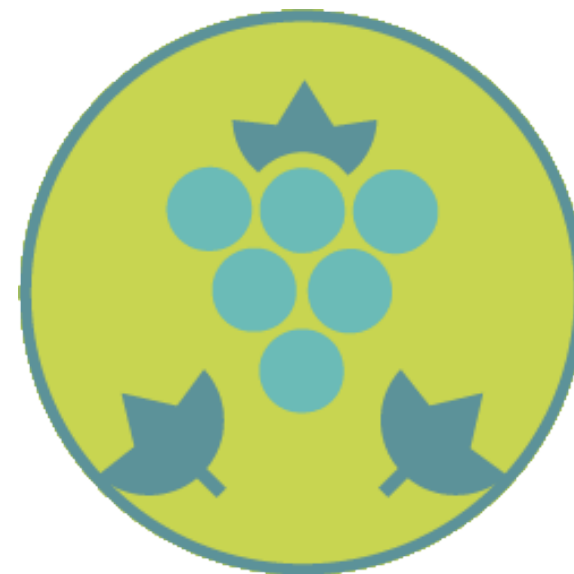
**PROTECT &
RESTORE NATURAL
ASSETS**



**STRENGTHEN LOCAL
FOOD & AGRICULTURAL
SYSTEMS**



**ENHANCE REGIONAL
PROSPERITY**




**IMPROVE
GOVERNANCE &
IMPLEMENTATION**




Across BC, communities are experiencing growing inequities in resources, access, and power

- Social equity applies to each policy chapter and should be central in decision making
- Some policies are either noted as **priority equity policies** or policies that require **implementation considerations**



 PRIORITIZE

 IMPLEMENTATION
CONSIDERATIONS

Goal

- Quantitatively evaluate the effectiveness of the policies

Scope

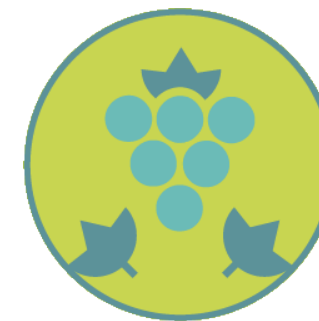
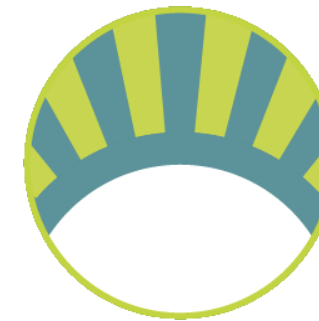
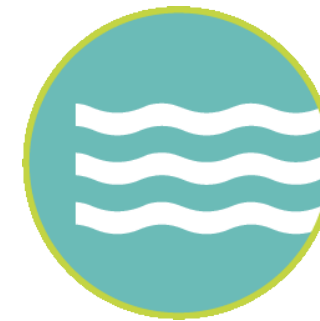
- A set of metrics connected to each of the major policy goals in the MOCP



“We manage to what we measure” - Drucker

Criteria

- Directly related to the policy goals
- Accurate data for CVRD & Electoral Areas that will be regularly updated
- Minimising cost and time for CVRD staff to access and process data





CHALLENGES

- Impacts to water quality and quantity
- Threats to ecosystem biodiversity
- Risks to silviculture activity
- Risk to agricultural activity
- Extreme heat, flooding, and wildfires

KEY TOPICS

- Climate crisis mitigation (reduction in GHGs)
- Climate crisis adaptation (resilience)

OBJECTIVES


Key objectives include reducing transportation, building, and solid waste GHG emissions will strengthen the region's climate resilience and adaptation measures







SAMPLE POLICIES

MITIGATION

- CC.2** Encourage retrofitting of older buildings and green construction of new buildings to achieve energy efficiency and a reduction in GHG emissions. * 
- CC.5** Incentivize a shift away from use of woodstoves and oil and gas furnaces to reduce emissions and impacts on public health.
- CC.8** Minimize waste generation and encourage greater diversion of all waste materials, including organics, recyclables and construction and demolition waste, from solid waste streams, with the goal of achieving zero waste. *

ADAPTATION

- CC.15** Prepare a Hazard, Risk, & Vulnerability Assessment and communicate the findings to CVRD communities through a proactive strategy for outreach and education.  
- CC.20** Conduct analysis of drought-related indicators to more fully understand climate impacts to soil, water supply and ecosystem health at the landscape level. *
- CC.20** Strengthen emergency management capacity to respond to weather-related emergencies. *



METRICS

- 1. Corporate GHGs**
- 2. Energy Consumption in Buildings**
- 3. Community GHG Emissions from Solid Waste**
- 4. Drought Level**
- 5. Fire & Emergency Response Capacity and Coverage**





CHALLENGES

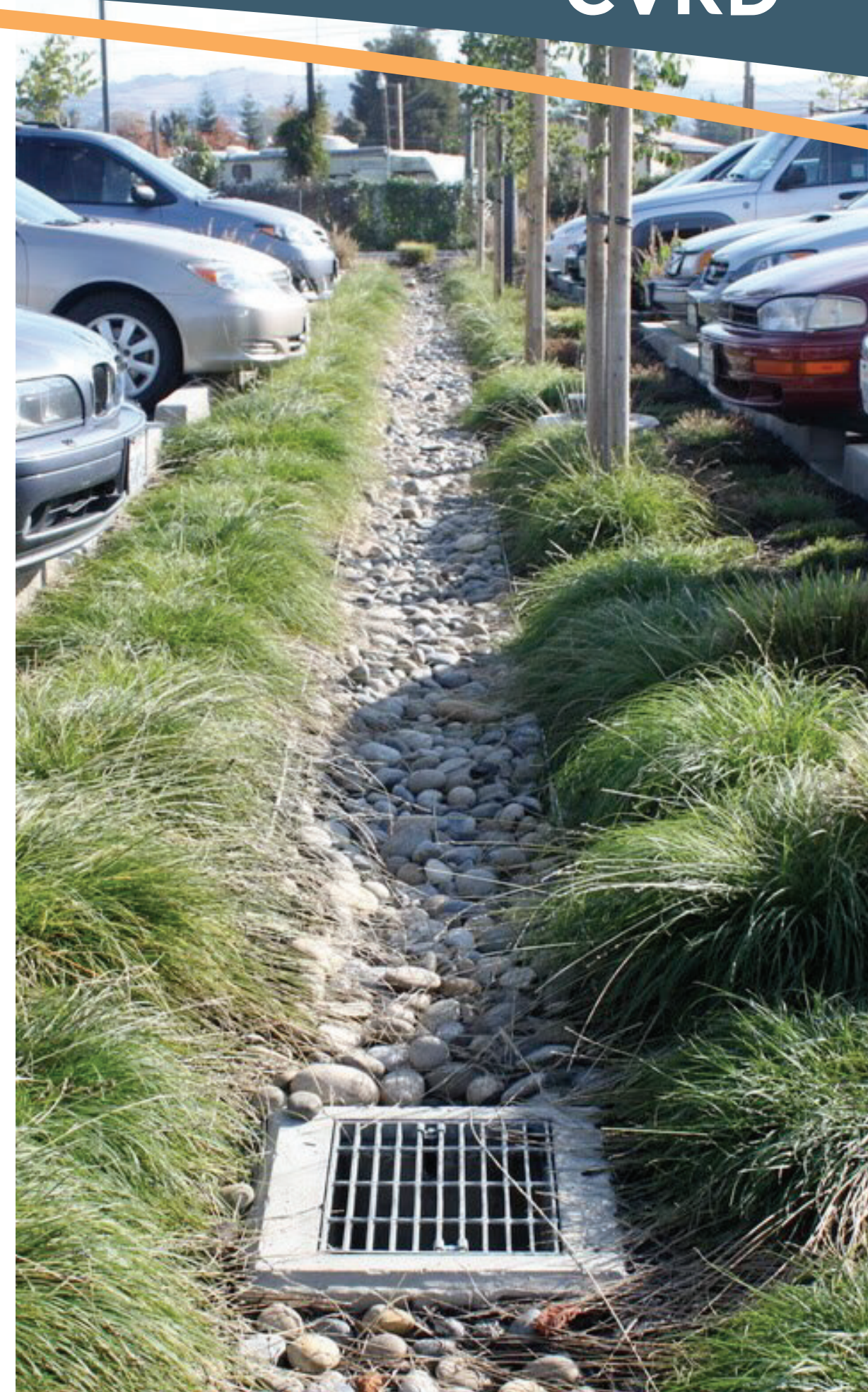
- Lifecycle considerations
- Limits to capacity
- Oversight and maintenance
- Increasing costs, revenue shortfalls
- Takeover of private systems

KEY TOPICS

- Water
- Wastewater
- Stormwater & Drainage
- Emergency Preparedness

OBJECTIVES

Key objectives include responsible infrastructure management through long-range plans that address growth demands, operational efficiency, and financial and environmental sustainability





SAMPLE POLICIES

WATER

- MI.1** Improve water quality and supply by mapping and analyzing subareas where water supply is stressed, and by applying investments accordingly. ○
- MI.6** Consult with jurisdictions dependent on a given water supply prior to approving new development within that watershed or water supply.

WASTEWATER

- MI.12** Ensure individual onsite sewerage systems meet standards outlined in the “BC Sewerage System Practice Manual” and prevent ecological degradation.

STORMWATER

- MI.15** Develop integrated stormwater management plans for key watersheds to ensure chemical and biological contaminants do not enter rainwater flows and to reduce the impacts of localized flooding.

EMERGENCY PREPAREDNESS

- MI.21** Designate a network of neighbourhood support hubs within the region as locations to focus and coordinate assistance efforts and share resources. These are post-disaster locations where staff and trained volunteers will prioritize getting information and providing services to the public.

GENERAL

- MI.26** Manage growth with the aim of ensuring at least 75% of new development is connected to infrastructure services. ✱
- MI.26** Monitor solid waste flows and seek to minimize and divert waste from landfills. ✱



SAMPLE METRICS

6. Population Serviced by CVRD or Private Utility Services

7. Solid Waste Stream Statistics





CHALLENGES

- Urban and rural sprawl
- Housing costs
- Out-of-character development

KEY TOPICS

- Housing
- Community Design
- Arts, Culture & Heritage
- Parks & Recreation

OBJECTIVES

Key objectives include the planning and design of communities that address resident desires for protecting the unique character of villages and landscapes, and enhancing affordability, health and wellbeing, and inclusivity.





SAMPLE POLICIES

HOUSING

- DC.1** Manage the supply and demand of housing units with the aim of ensuring:
- housing price increases do not exceed the rate of inflation; *
 - a healthy ratio between housing sales and housing inventory; *
 - vacancy rates of rental units above 3%;
 - housing addresses the specific needs of diverse individuals, as identified in the Housing Needs Assessment report, including: *○
 - Indigenous peoples
 - Seniors
 - Youth
 - People with disabilities
 - Low-income families

COMMUNITY DESIGN

- DC.18** Support development that contributes to healthy and happy public spaces suitable for 8 and 80 year olds, following the spirit of the 8-80 community framework (880cities.org). ○
- DC.19** Work with residents, community groups, First Nations and developers to reveal place-based assets and stories as inspiration for building and landscape designs in new projects.

PARKS, RECREATION, CULTURE

- DC.28** Encourage cultural expression through public art pieces that reflect diverse community backgrounds, interests and needs. Explore funding mechanisms, such as Community Amenity Contributions, to help create more public art. ○△
- DC.39** Expand the recreational trail system to encourage healthy living and appreciation for the outdoors. *



METRICS

8. Total Growth Statistics

9. Percentage of Growth within Growth Containment Boundaries

10. Hectares (Ha) of Community Parks in the CVRD and Managed by the CVRD

11. Area of CVRD Managed Park/ Per Capita/Electoral Area

12. Recreational Trail Kilometres (km) in Community and Regional Parks



METRICS

13.CVRD House Prices

14.Housing Affordability

15.Housing Growth and Unit Types

16.Housing Starts

17.Sales to Inventory Ratio for Housing





CHALLENGES

- Geography and population density
- Lack of authority
- Unintegrated land use and transportation systems
- Gaps in the (trails) network

KEY TOPICS

- Sustainable modes
- Vehicle modes

OBJECTIVES

Key objectives include encouraging the development of infrastructure for more sustainable modes of transportation and reducing car dependency.





SAMPLE POLICIES

SUSTAINABLE MODES

- MO.1** Support initiatives that increase sustainable transportation mode share (transit, cycling, walking). ✱
- MO.17** Support BC Transit in its initiatives to make transit more effective and user-friendly by: ✱
- updating the Transit Future Action Plan (2012) to establish short- and medium-term improvements over the next one to five years;
 - establishing a new interregional transit route with the Regional District of Nanaimo;
 - installing bus shelters in as many locations as possible;
 - incorporating real time and automatic bus locators;
 - installing automated passenger counters;
 - expanding handyDART and regular service; and
 - finding suitable locations for expanded park and ride facilities along key bus routes including safe bike lockers.

VEHICLE MODES

- MO.20** Support the use of electric vehicles and encourage the installation of EV charging stations in key locations by developers and property owners. Explore tools and incentives to develop EV infrastructure in private facilities. ▲
- MO.22** Ensure adequate parking areas adjacent to major destinations like parks, trails and beaches. ▲
- MO.23** Use design strategies to minimize the visual impacts of vehicle parking on the region's rural landscapes.



METRICS

18. Mode of Transportation to Work by Electoral Area

19. Percentage of Population within 400m of a Transit Line





CHALLENGES

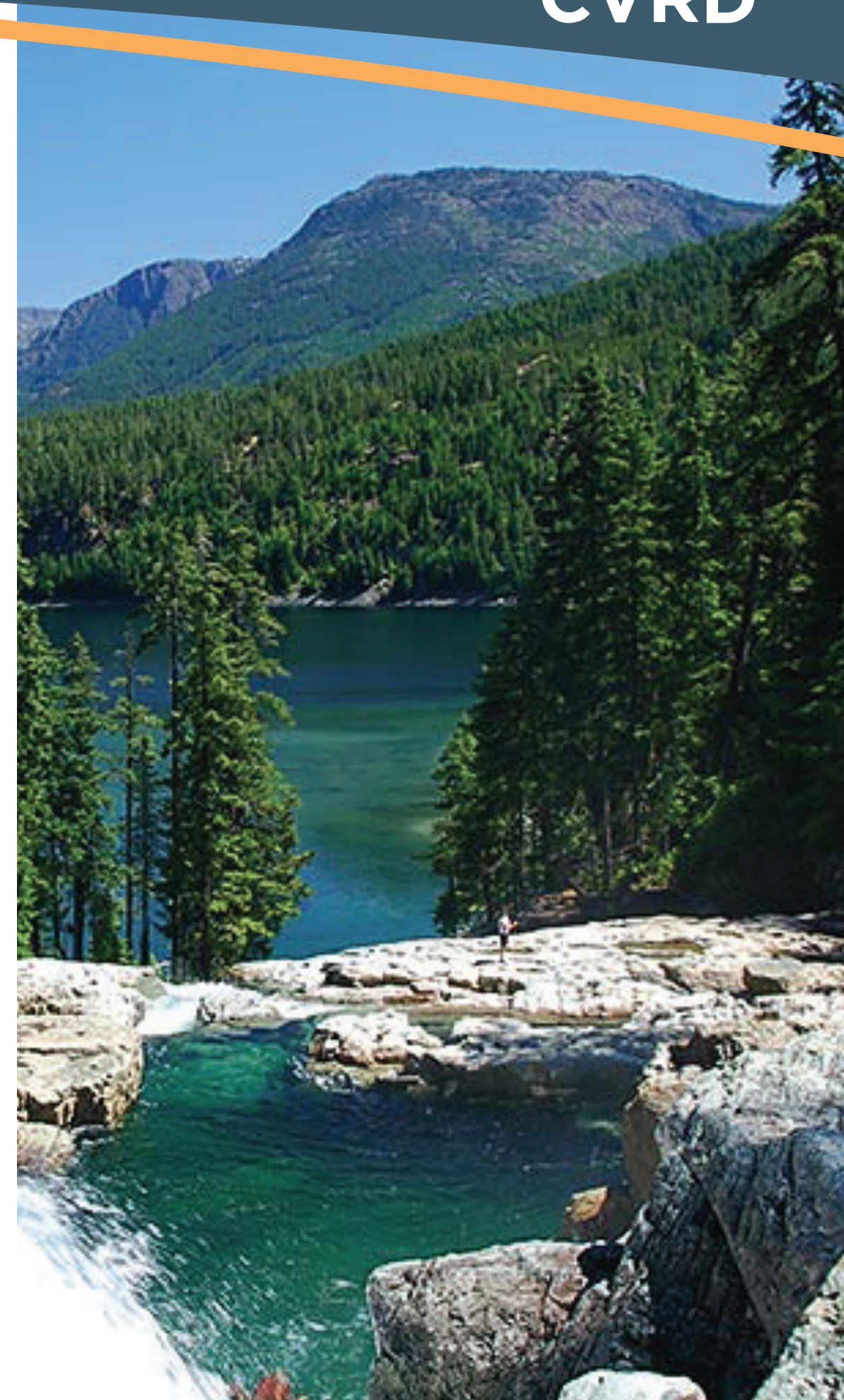
- Human footprint in natural areas
- Habitat loss, fragmentation and degradation
- Increase in invasive species
- Climate change

KEY TOPICS

- Natural Asset Framework
- Terrestrial Ecosystems
- Aquatic Ecosystems

OBJECTIVES

Key objectives include the development of a natural asset framework as a tool to identify, prioritize, protect, and enhance sensitive ecosystems, while ensuring the continued health of watersheds and airsheds.





SAMPLE POLICIES

NATURAL ASSET FRAMEWORK

- NA.1** Establish a Natural Asset Management Framework that includes:
- identification & assessment;
 - watershed management plans as guiding documents that inventory priority natural assets;
 - evaluating the condition of identified natural assets;
 - planning;
 - priorities defined by risk identification;
 - scenario exploration;
 - implementation strategies; and
 - a decision-making process based on the business case vis a vis natural asset management (non-political decision making)

TERRESTRIAL ECOSYSTEMS

- NA.5** As part of efforts to increase the percentage of lands dedicated and managed as protected natural areas, consider committing to the UN Biodiversity goals of 30% of all land and water to be protected by 2030 and 50% by 2050. ✱
- NA.9** Seek to protect species at risk and monitor the scale and change of species listed as being at risk in the region. ✱
- NA.13** Increase the canopy cover. ○△

AQUATIC ECOSYSTEMS

- NA.26** Discourage development immediately adjacent to a mudflat, marsh or delta areas.
- NA.30** Develop “Living by Water” foreshore management education materials to help property owners protect creeks and rivers that cross or are adjacent to their property. △



METRICS

20. Percentage of Area and Hectares Classified as Environmentally Sensitive

21. Species at Risk

22. Air Quality (PM 2.5) – 24 hr Peak + 1 Year Average





CHALLENGES

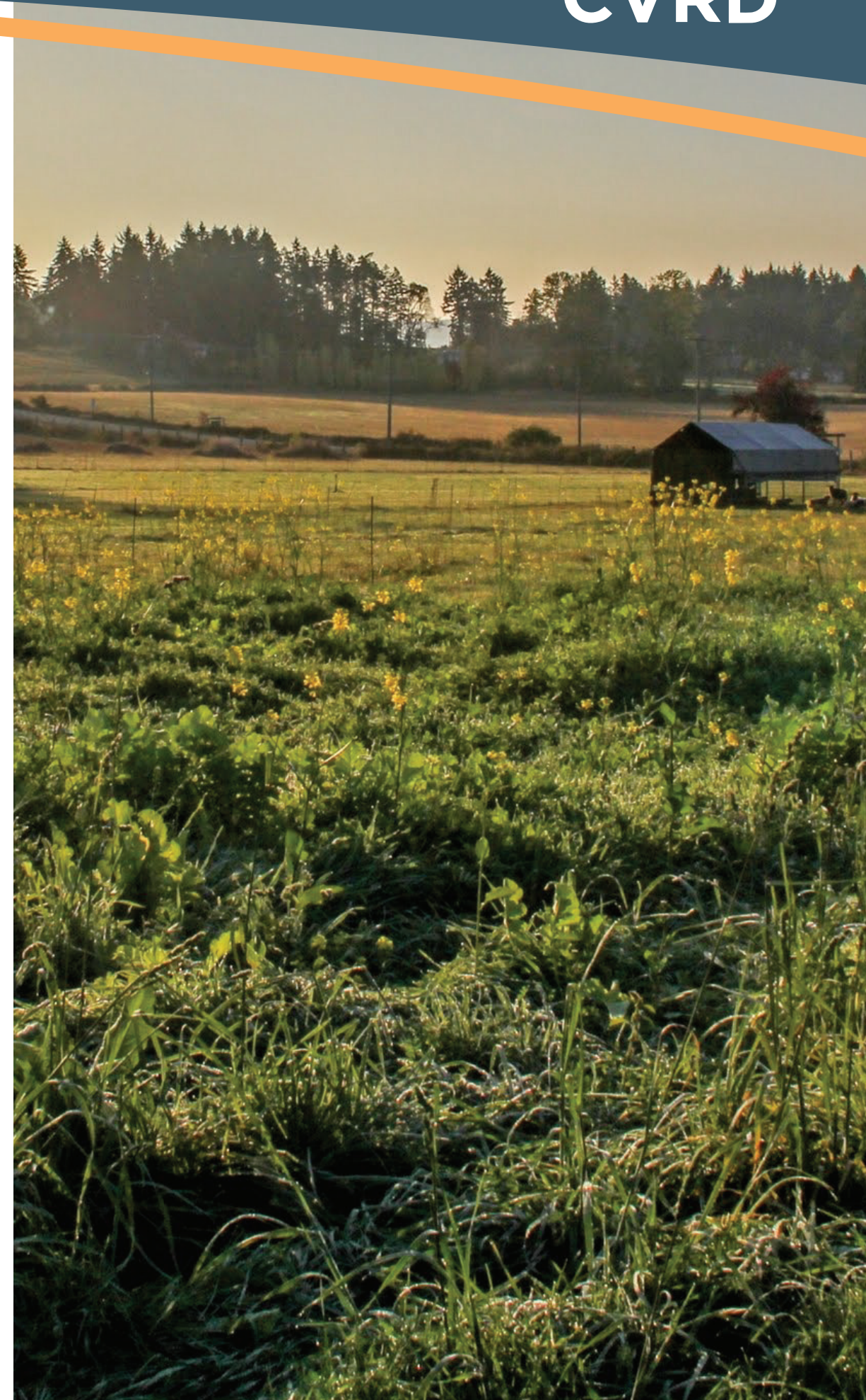
- Land conversion and land use conflict
- Water resource availability
- Climate impacts
- Availability of labour & farm worker housing
- Rising cost of living and farming

KEY TOPICS

- Agricultural Lands
- Food Production

OBJECTIVES

Key objectives include the protection of agricultural land and ensuring sustainable practices while enhancing local food security.





SAMPLE POLICIES

AGRICULTURAL LANDS

- FA.5** Discourage exclusion of ALR land unless it is in part with a community-wide planning process. ✱
- FA.6** Encourage agricultural land leasing and the accommodation of lessees of agricultural land. Collaborate with external organizations, such as Young Agrarians, to identify opportunities to increase agricultural opportunities on public lands. ○△
- FA.11** Educate neighbours about normal farm practices such as odour, noise and traffic, traffic and the Farm Practices Protection (Right to Farm) Act. △

FOOD PRODUCTION

- FA.6** Support the establishment of local food markets as key elements of the local food system. ○
- FA.6** In Rural, Suburban and Urban lands, support and encourage a range of urban agriculture using approaches that include, but are not limited to: ○
- food production on private lands including front yards, backyards, hens and beehives;
 - food production on public lands that include edible landscaping on residential boulevards, park land, backyards and rights-of-way; and
 - investment into the development of new community gardens on public and private lands.

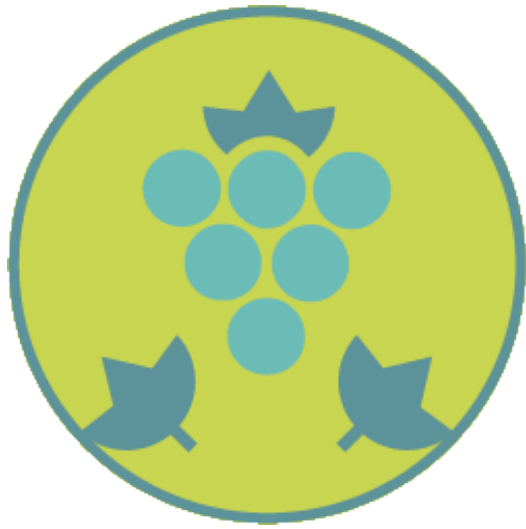


METRICS

23. ALR Exclusions and Inclusions

24. Land in Food/Crop Production





CHALLENGES

- Rising global energy & resource needs
- High impact industrial areas
- Bedroom communities
- Seasonal tourism
- A changing commercial sector

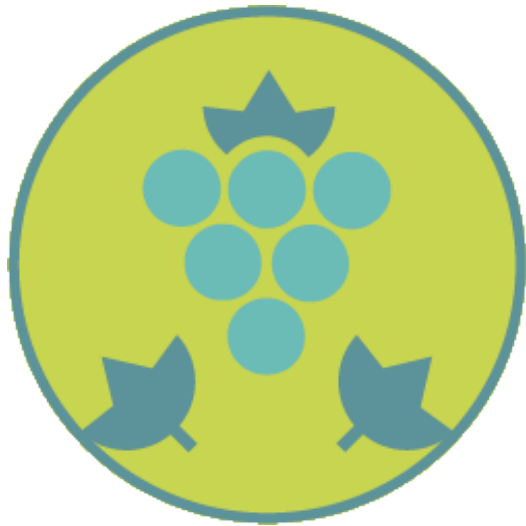
KEY TOPICS

- Employment lands
- Innovative economy
- Circular economy
- Tourism

OBJECTIVES

Key objectives include providing an adequate amount of employment lands to meet the needs of a growing population and encouraging an emerging, circular, and green economy.





SAMPLE POLICIES

EMPLOYMENT LANDS

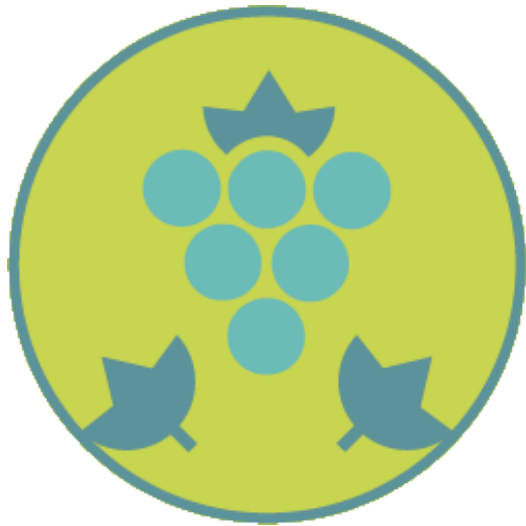
- RP.6** Encourage out migration of heavy industry from the Koksilah Industrial Park to a less sensitive area (e.g., not adjacent to a residential neighbourhood or on top of a vulnerable aquifer). ○
- RP.8** Support a diversity of commercial and light industrial uses that provide living wage employment and contribute to the local economy. *○
- RP.8** Explore economic development partnerships with local First Nations that are mutually beneficial, and support initiatives including: ○
- Malahat Business Park; and
 - Stz'uminus Waterfront Plan at Oyster Bay.

INNOVATIVE & CIRCULAR

- RP.17** Improve connectivity in underserved communities to the national standard (currently 50/10 and LTE). *○
- RP.21** Encourage businesses and development that attract and maintain a highly skilled workforce. *
- RP.26** Support the progressive rehabilitation of resource-based activities to an appropriate after-use, such as viable agricultural land or reforestation, that is compatible with the applicable regional OCP designation, surrounding environment and existing uses.

TOURISM

- RP.28** Encourage the growth of tourism as a keystone industry that will help the region diversify its economy. △
- RP.28** Protect scenic landscapes alongside highways and rural routes to support the tourism sector.



METRICS

25. Median and Gross Incomes—Average & One- and Two-Person Households

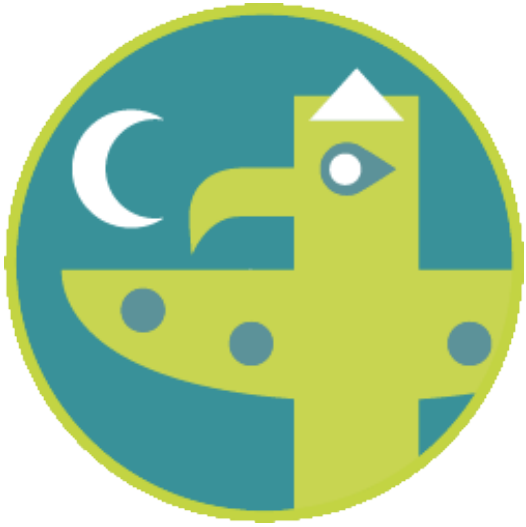
26. Labour Force by Industry

27. Highest Level of Education in the CVRD (Age 15+)

28. Growth of Business in the Region

29. Internet Connectivity in the CVRD





KEY TOPICS

- Alignment with Other Plans
- Relationship Building
- Equitable Implementation
- Monitoring Progress





SAMPLE POLICIES

FIRST NATIONS

- GI.1** Build and maintain relationships with local First Nations, including the Cowichan Tribes, Ditidaht, Penelakut, Halalt, Stz'uminus, Lake Cowichan, Lyackson, Malahat and Pauquachin First Nations.
- GI.2** Use the United Nations Declaration on the Rights of Indigenous Peoples as a framework of minimum standards for advancing reconciliation with local First Nations.
- GI.3** Explore the establishment of memorandums of understanding with each local First Nation to proceed towards common goals, and promote collaboration, cooperation and dialogue.

- GI.4** Explore opportunities with local First Nations for partnerships in infrastructure servicing, economic development, housing, environmental stewardship, arts & culture and wherever plans include shared priorities and goals.

PROVINCIAL GOVERNMENT

- GI.5** Work with the province on matters that are within their jurisdiction:
- MoTI to analyze and resolve drainage issues and approvals for subdivision;
 - MoTI and BC Transit to reduce car dependency and provide safer more sustainable transportation options;
 - BC Housing to build a wider range of affordable and below-market housing options; and,
 - Agricultural Land Commission and the Ministry of Agriculture to ensure a thriving agricultural industry.

FEDERAL GOVERNMENT

- GI.6** Work with the federal government on matters that are within their jurisdiction:
- Department of Fisheries and Oceans on protecting watercourses and establishing modernized policies for marine and foreshore environments; and,
 - Ministry of Environment to protect species at risk and enhance natural assets by building on and expanding the federal SARA safety net.

INCORPORATED MUNICIPALITIES

- GI.7** Collaborate with all incorporated municipalities (District of North Cowichan, City of Duncan, Town of Lake Cowichan and Town of Ladysmith) to ensure alignment of visions and goals.



OFFICIAL COMMUNITY PLAN FOR THE ELECTORAL AREAS

BYLAW 4373

March 2, 2022